



CRAWFORD LOG HOME PARADISE



A gorgeous log home sitting on 183± acres in Sioux County, NE.

STEPHANIE MILLER

Sales Associate

Stephanie's Cell: 605-645-6141

Email: stephanie@lashleyland.com

PROPERTY HIGHLIGHTS

List Price

\$1,530,000

\$1,100,000

Location

187 Milo Rd., Crawford, NE 69346

Legal Description

33-33-53 PT W1/2SW1/4 23.1616 ACRES AND 32-33-52 SE1/4 160 ACRES

Acres

183.161±

Buyers and Sellers acknowledge all represented acres are based on the County Assessor's records. Buyers acknowledge that they are purchasing a legal description, and acknowledge that fences may or may not be on the property lines.

Taxes - Estimated

\$6,676.20

Property Summary

Trail riders paradise!!! This beautiful log home retreat is a horse enthusiasts dream come true! This beautiful 3 bedroom, 3 bathroom, custom built log home with 3 stories has an elevator to take you to each floor, or take the stairs if you prefer. It's off the beaten path, and completely self sufficient with backup generators and its own well. This home has so much charm and character; you'll never want to leave!! The property has 180 acres for your horses to stretch their legs, with 2 year round springs, and a brand new border fence with an entry gate. Oh, and did we mention it is surrounded by over 14,000 acres USFS land, and right around the corner from Fort Robinson State Park, the riding adventures are endless!!! If that isn't enough for you, there are two large shops, one is 55x120 with an all dirt floor and entry doors on both ends. Perfect for your horse barn and indoor winter riding! The other is a 45x70 fully insulated shop with a large man cave, or easily turn it into the most amazing tack room ever!! When you're not riding, you can sit on your deck and enjoy the view. You can see all the way to the Black Hills, the views are truly unmatched!

All information herein is from sources deemed reliable, however the accuracy is not guaranteed by Lashley Land and Recreational Brokers, Inc., seller or agent. Offering is subject to error, omissions, prior sale, price change or withdrawal without notice.

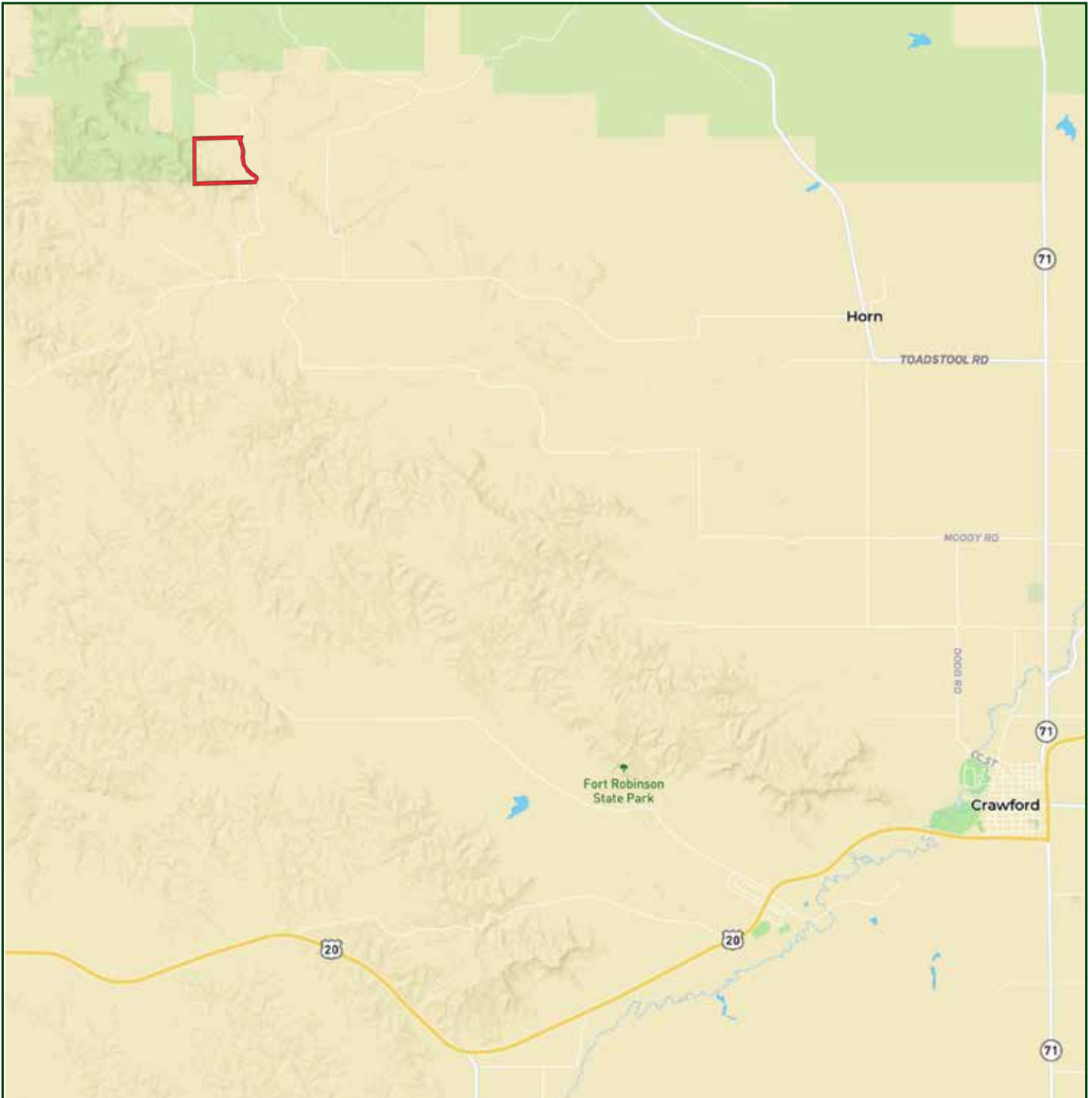
STEPHANIE MILLER

Sales Associate

Stephanie's Cell: 605-645-6141

Email: stephanie@lashleyland.com

LOCATION MAP



Boundary lines are estimates - Map for illustration only

AERIAL MAP



Boundary lines are estimates - Map for illustration only

STEPHANIE MILLER

Sales Associate

Stephanie's Cell: 605-645-6141

Email: stephanie@lashleyland.com

PROPERTY IMAGES



PROPERTY IMAGES



STEPHANIE MILLER

Sales Associate

Stephanie's Cell: 605-645-6141

Email: stephanie@lashleyland.com

PROPERTY IMAGES



PROPERTY IMAGES

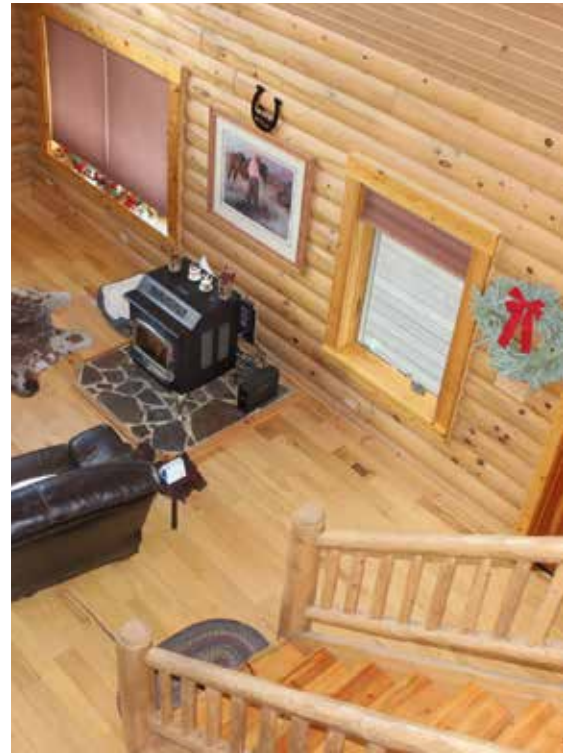


STEPHANIE MILLER
Sales Associate
Stephanie's Cell: 605-645-6141
Email: stephanie@lashleyland.com

PROPERTY IMAGES



PROPERTY IMAGES



STEPHANIE MILLER

Sales Associate

Stephanie's Cell: 605-645-6141

Email: stephanie@lashleyland.com

PROPERTY IMAGES





NEBRASKA EXPERTS, NATIONAL EXPOSURE

Contact Information

Office: 308-532-9300

Fax: 308-532-1854

Email: info@lashleyland.com

Website: LashleyLand.com

Mike Lashley, Owner|Broker

Amy Lashley-Johnston, Scott Saults, Skip Marland, Jordan Maassen, April Good, Jon Farley, Tami Timmerman-Lashley, Randy Helms, Dodi Osburn, Bill Grant, Shane Mauch, Jake McQuillen, Brandi Housman, Leala Jimerson, Stephanie Miller, DeAnn Vaughn, Ann Gray, Jake Hopwood, and Alex Nelson

Like us on Facebook

[Facebook.com/LashleyLand](https://www.facebook.com/LashleyLand)

2218 E. Walker Road • North Platte, NE 69101

STEPHANIE MILLER

Sales Associate

Stephanie's Cell: 605-645-6141

Email: stephanie@lashleyland.com