

## SAGE MOTEL



A historical motel and restaurant combo in Harrison, NE.

**LEALA JIMERSON**

Sales Associate

Leala's Cell: 308-615-9065

Email: [leala@lashleyland.com](mailto:leala@lashleyland.com)

# PROPERTY HIGHLIGHTS

**List Price** **\$285,000**

**Location** Harrison, NE

## Legal Description

E1/2 BLOCK 2, W 130' BLOCK 3 (300') QUINTARD ADDITION HARRISON Sioux County NE

**Acres** 1.39±

Buyers and Sellers acknowledge all represented acres are based on the County Assessor's records.  
Buyers acknowledge that they are purchasing a legal description, and acknowledge that fences may or may not be on the property lines.

**Taxes - Estimated** **\$1,538.34**

## Property Summary

Own a piece of history from Fort Robinson in the Harrison, Nebraska!! These were once outbuildings located on Fort Robinson, these were moved to Harrison and turned into a motel! Frequenting by hunters and travelers alike, this is a rare income opportunity for someone wanting a home that pays for itself, or hire a manager and make some extra cash!

There are 12 units total: 3 units with two full beds(\$79.00), 8 units with 1 queen bed (\$69.00), and 1 unit with 2 queen beds (\$89.00). For the owner occupied buyer, there is a one (possibly to bedroom) manager's quarters with new flooring.

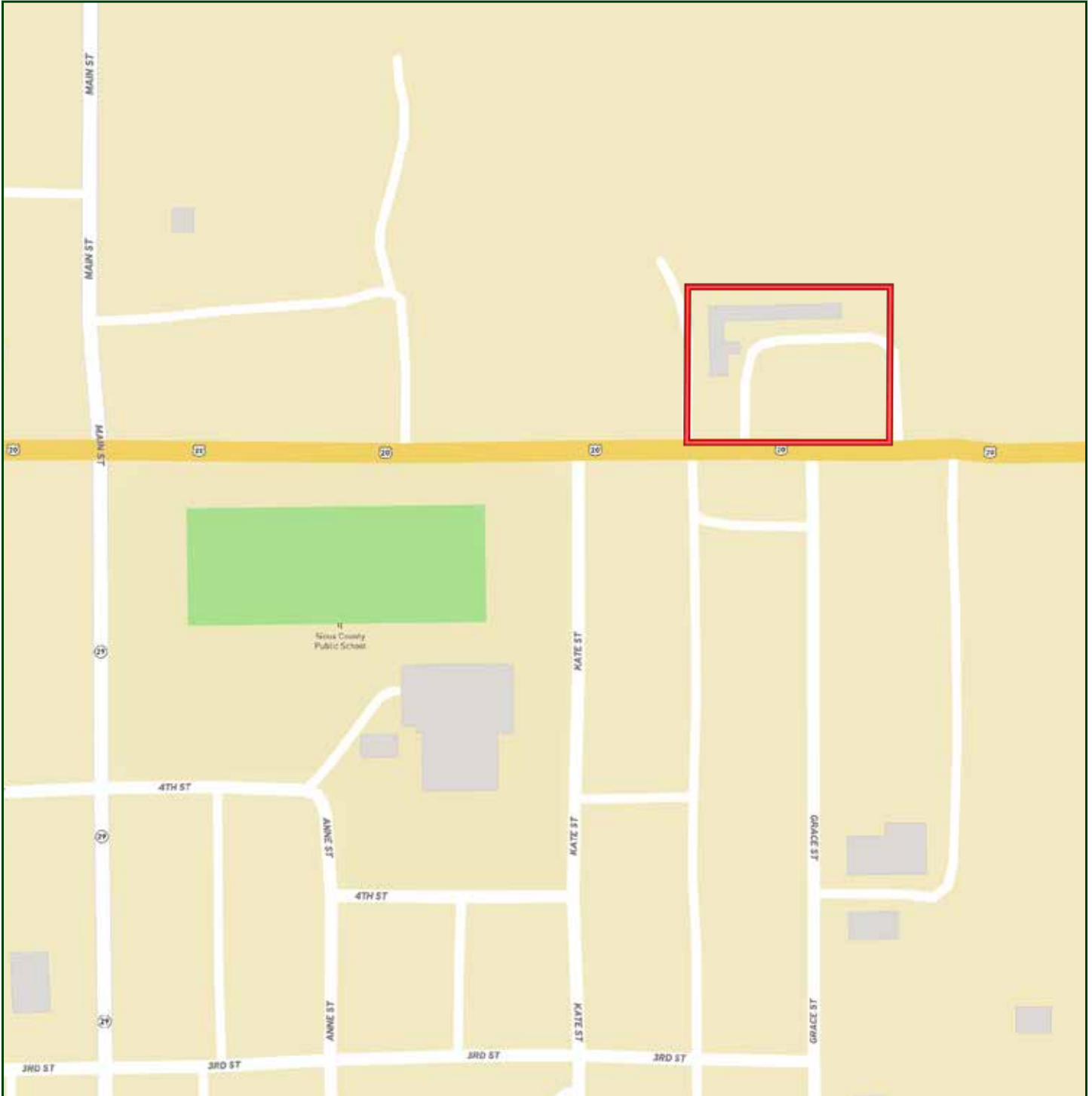
The property has many improvements!! These include a new roof, new doors, new windows, new carpet in 11 rooms, new mattresses, new bedding and towels, 3 new water heaters, new televisions in most rooms, new mini refrigerator, new microwaves, and new air conditioners.

You'll also get two streams of revenue, with the restaurant being included also. This has a brand new \$17,000 vent hood, and is currently being rented for \$350/month. When a restaurant occupied the building rent was \$700/month)

All information herein is from sources deemed reliable, however the accuracy is not guaranteed by Lashley Land and Recreational Brokers, Inc., seller or agent. Offering is subject to error, omissions, prior sale, price change or withdrawal without notice.

**LEALA JIMERSON**  
Sales Associate  
Leala's Cell: 308-615-9065  
Email: leala@lashleyland.com

# LOCATION MAP



Boundary lines are estimates - Map for illustration only

# AERIAL MAP



**Boundary lines are estimates - Map for illustration only**

**LEALA JIMERSON**  
Sales Associate  
Leala's Cell: 308-615-9065  
Email: leala@lashleyland.com

# PROPERTY IMAGES



# PROPERTY IMAGES



**LEALA JIMERSON**  
Sales Associate  
Leala's Cell: 308-615-9065  
Email: leala@lashleyland.com

# PROPERTY IMAGES





# NEBRASKA EXPERTS, NATIONAL EXPOSURE

## Contact Information

Office: 308-532-9300

Fax: 308-532-1854

Email: [info@lashleyland.com](mailto:info@lashleyland.com)

Website: [LashleyLand.com](http://LashleyLand.com)

## Mike Lashley, Owner|Broker

Amy Lashley-Johnston, Scott Saults, Skip Marland, Jordan Maassen, April Good, Jon Farley, Tami Timmerman-Lashley, Randy Helms, Dodi Osburn, Bill Grant, Shane Mauch, Jake McQuillen, Brandi Housman, Leala Jimerson, Stephanie Miller, DeAnn Vaughn, Ann Gray, and Jake Hopwood

Like us on Facebook

[Facebook.com/LashleyLand](https://www.facebook.com/LashleyLand)

2218 E. Walker Road • North Platte, NE 69101

## LEALA JIMERSON

Sales Associate

Leala's Cell: 308-615-9065

Email: [leala@lashleyland.com](mailto:leala@lashleyland.com)