

**3021 WRIGHT AVE.
NORTH PLATTE, NE**



A 3 bedroom ranch style home on a large corner lot.

TAMI TIMMERMAN-LASHLEY

Residential Specialist

Tami's Cell: 308-660-9468

Email: tami@lashleyland.com

PROPERTY HIGHLIGHTS

List Price	\$220,000
Location	3021 Wright Ave., North Platte, NE
Legal Description	AL ZIEGLERS REPLAT W. 108' 1
Taxes - Estimated	\$3,176.48

Property Summary

The perfect amount of tradition meets modern in this 3 bedroom ranch style home. Enjoy a unique floor plan with 1,920 sqft and various sized rooms including a large multipurpose room that was once a garage. The entire home has been updated, and a new roof was installed at the end of March 2022. Outside, the beautiful and large corner lot has plenty of room for outdoor entertaining with a pergola just steps away from the kitchen. The yard is fully fenced, and there is a detached 2 car garage. Call today to set up your personal tour of this move in ready home.

Square footage taken off the Lincoln County assessors card and are an approximate and not guaranteed.

All information herein is from sources deemed reliable, however the accuracy is not guaranteed by Lashley Land and Recreational Brokers, Inc., seller or agent. Offering is subject to error, omissions, prior sale, price change or withdrawal without notice.

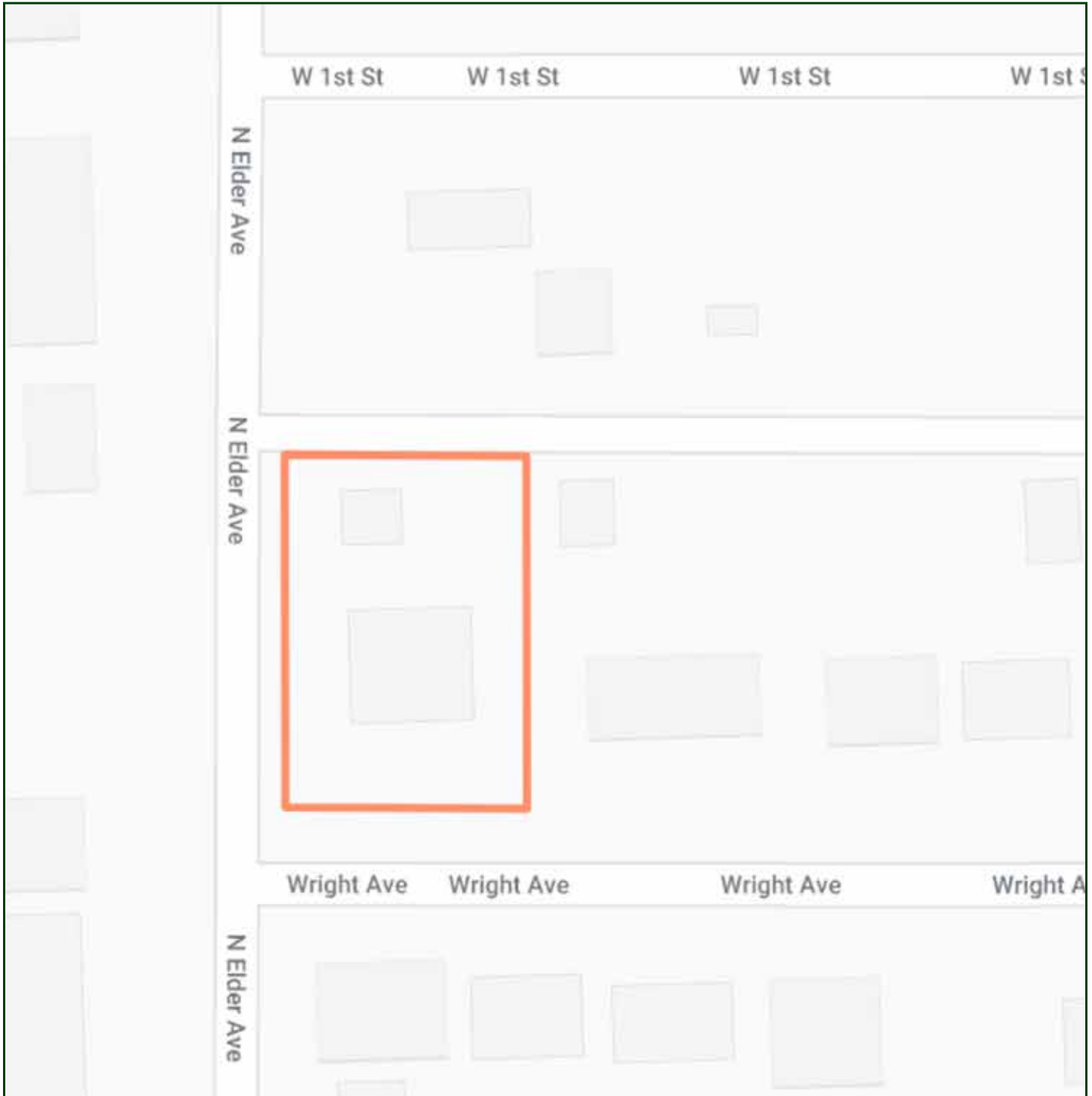
TAMI TIMMERMAN-LASHLEY

Residential Specialist

Tami's Cell: 308-660-9468

Email: tami@lashleyland.com

LOCATION MAP



Boundary lines are estimates - Map for illustration only

AERIAL MAP



Boundary lines are estimates - Map for illustration only

TAMI TIMMERMAN-LASHLEY

Residential Specialist

Tami's Cell: 308-660-9468

Email: tami@lashleyland.com

PROPERTY IMAGES

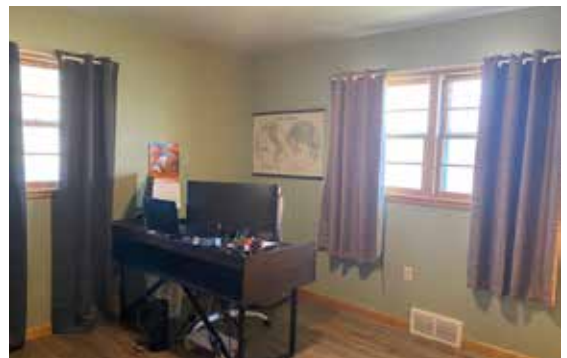


PROPERTY IMAGES



TAMI TIMMERMAN-LASHLEY
Residential Specialist
Tami's Cell: 308-660-9468
Email: tami@lashleyland.com

PROPERTY IMAGES





THE REAL ESTATE EXPERTS YOU CAN TRUST

Contact Information

Office: 308-532-9300

Fax: 308-532-1854

Email: info@lashleyland.com

Website: LashleyLand.com

Mike Lashley, Owner|Broker

Amy Lashley-Johnston, Scott Saults, Skip Marland,
Jordan Maassen, April Good, Jon Farley,
Bryan North, Tami Timmerman-Lashley, Randy Helms,
Dodi Osburn, Bill Grant, Adam Shada, and Shane Mauch

Like us on Facebook

[Facebook.com/LashleyLand](https://www.facebook.com/LashleyLand)

2218 E. Walker Road • North Platte, NE 69101

TAMI TIMMERMAN-LASHLEY

Residential Specialist

Tami's Cell: 308-660-9468

Email: tami@lashleyland.com