



# KEITH COUNTY FARM AND GRASS



A great farm and ranch unit with 638± acres just North of Brule, NE.

**SCOTT SAULTS**

Associate Broker

Scott's Cell: 308-289-1383

Email: [scott@lashleyland.com](mailto:scott@lashleyland.com)

# PROPERTY HIGHLIGHTS

<b>List Price</b>	<b>\$575,000</b>
<b>Location</b>	5 miles North of Brule, NE
<b>Legal Description</b>	All 34-14-40 638.76A 95D-B-B-16_STR (34 14 40)
<b>Acres</b>	Grass: 456± Drycrop: 176± <b>TOTAL: 638±</b>
<b>Taxes - Estimated</b>	<b>\$3,713.16</b>

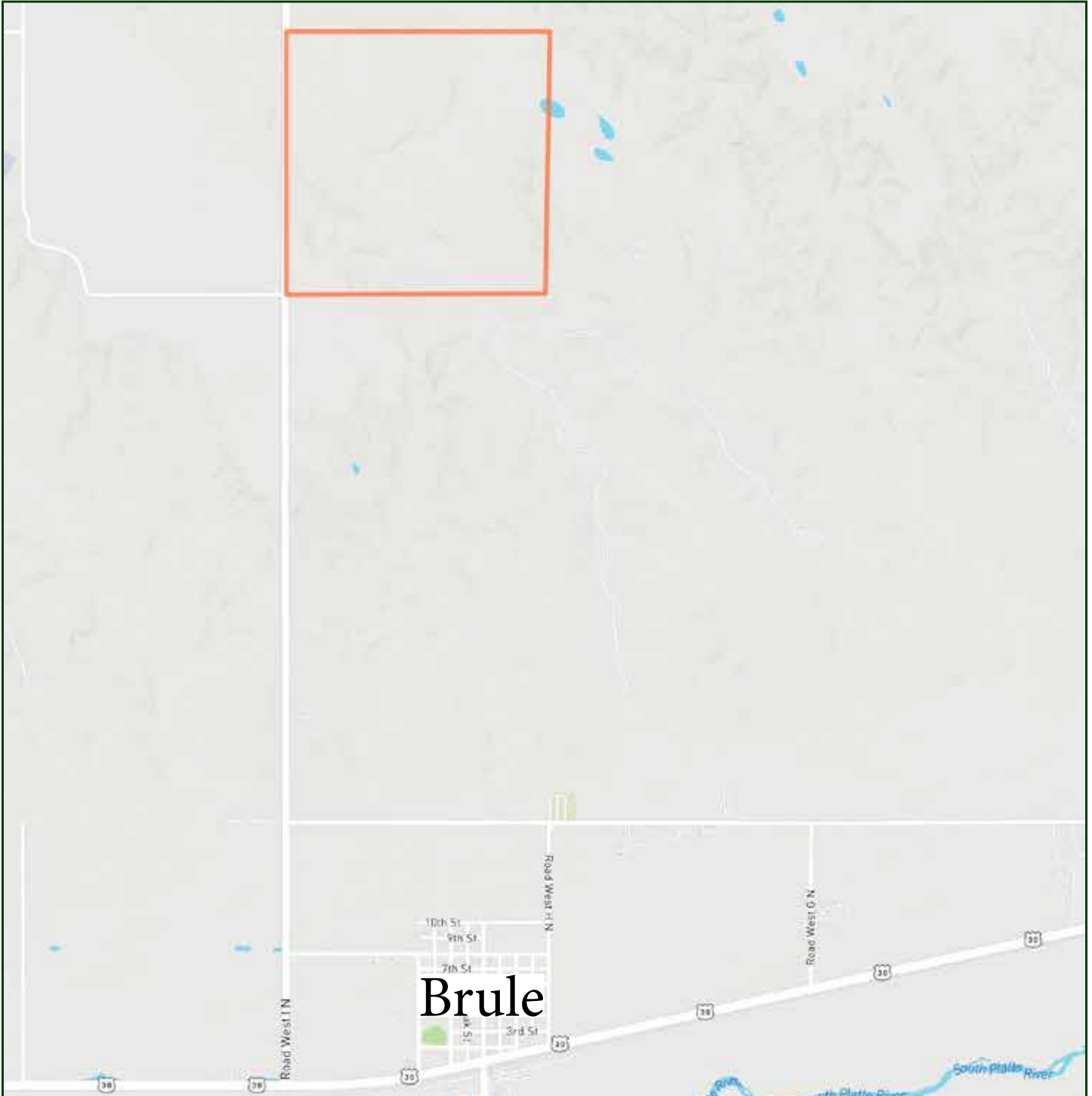
## Property Summary

Here is a great combo farm in Keith county that is only 5 miles North of Brule, NE. The current Owner has been taking in 35 pairs for 5 months. The pasture is watered by a solar well with a plug to use a generator if needed. The farm ground can be rented or custom farmed. The property enjoys great access on a good county gravel road, which forms the West boundary. There are several good spots to build a home or put in a set of improvements. There is also good deer hunting with the crops, grass, and canyon running through the pasture. Call Scott for your showing today.

All information herein is from sources deemed reliable, however the accuracy is not guaranteed by Lashley Land and Recreational Brokers, Inc., seller or agent. Offering is subject to error, omissions, prior sale, price change or withdrawal without notice.

**SCOTT SAULTS**  
Associate Broker  
Scott's Cell: 308-289-1383  
Email: [scott@lashleyland.com](mailto:scott@lashleyland.com)

# LOCATION MAP



Boundary lines are estimates - Map for illustration only



# AERIAL MAP



**Boundary lines are estimates - Map for illustration only**

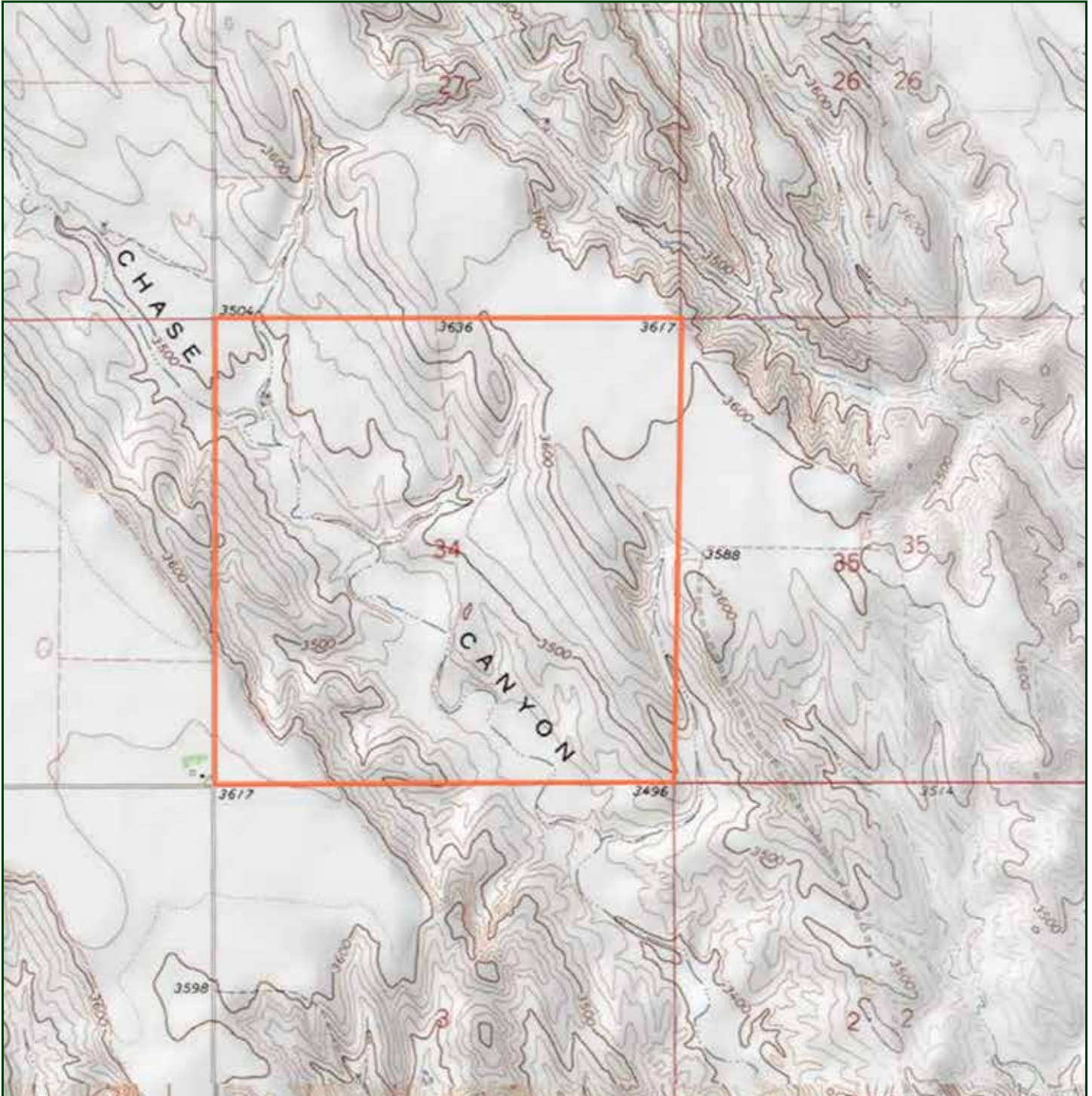
**SCOTT SAULTS**

Associate Broker

Scott's Cell: 308-289-1383

Email: [scott@lashleyland.com](mailto:scott@lashleyland.com)

# TOPO MAP



Boundary lines are estimates - Map for illustration only



# PROPERTY IMAGES



**SCOTT SAULTS**  
Associate Broker  
Scott's Cell: 308-289-1383  
Email: [scott@lashleyland.com](mailto:scott@lashleyland.com)



# PROPERTY IMAGES





## THE LAND EXPERTS YOU CAN TRUST

### Contact Information

Office: 308-532-9300

Fax: 308-532-1854

Email: [info@lashleyland.com](mailto:info@lashleyland.com)

Website: [LashleyLand.com](http://LashleyLand.com)

### Mike Lashley, Owner|Broker

Amy Lashley-Johnston, Scott Saults, Skip Marland,  
Jordan Maassen, April Good, Steve Farris, Dina Denton,  
Jon Farley, Bryan North, Tami Timmerman-Lashley,  
Randy Helms, Dodi Osburn, Bill Grant, and Adam Shada

Like us on Facebook

[Facebook.com/LashleyLand](https://www.facebook.com/LashleyLand)

2218 E. Walker Road • North Platte, NE 69101

## SCOTT SAULTS

Associate Broker

Scott's Cell: 308-289-1383

Email: [scott@lashleyland.com](mailto:scott@lashleyland.com)