

BIG SPRINGS ACREAGE



A 4 bedroom house sitting on 3.76± acres just South of Big Springs.

SCOTT SAULTS

Associate Broker

Scott's Cell: 308-289-1383

Email: scott@lashleyland.com

PROPERTY HIGHLIGHTS

List Price	\$295,000
Location	6 miles South of Big Springs, NE (31295 Road 770 Big Springs, NE)
Legal Description	20 12 41-12-41 SE1/4SE1/4
Acres	3.76±
Taxes - Estimated	\$2,069.74

Property Summary

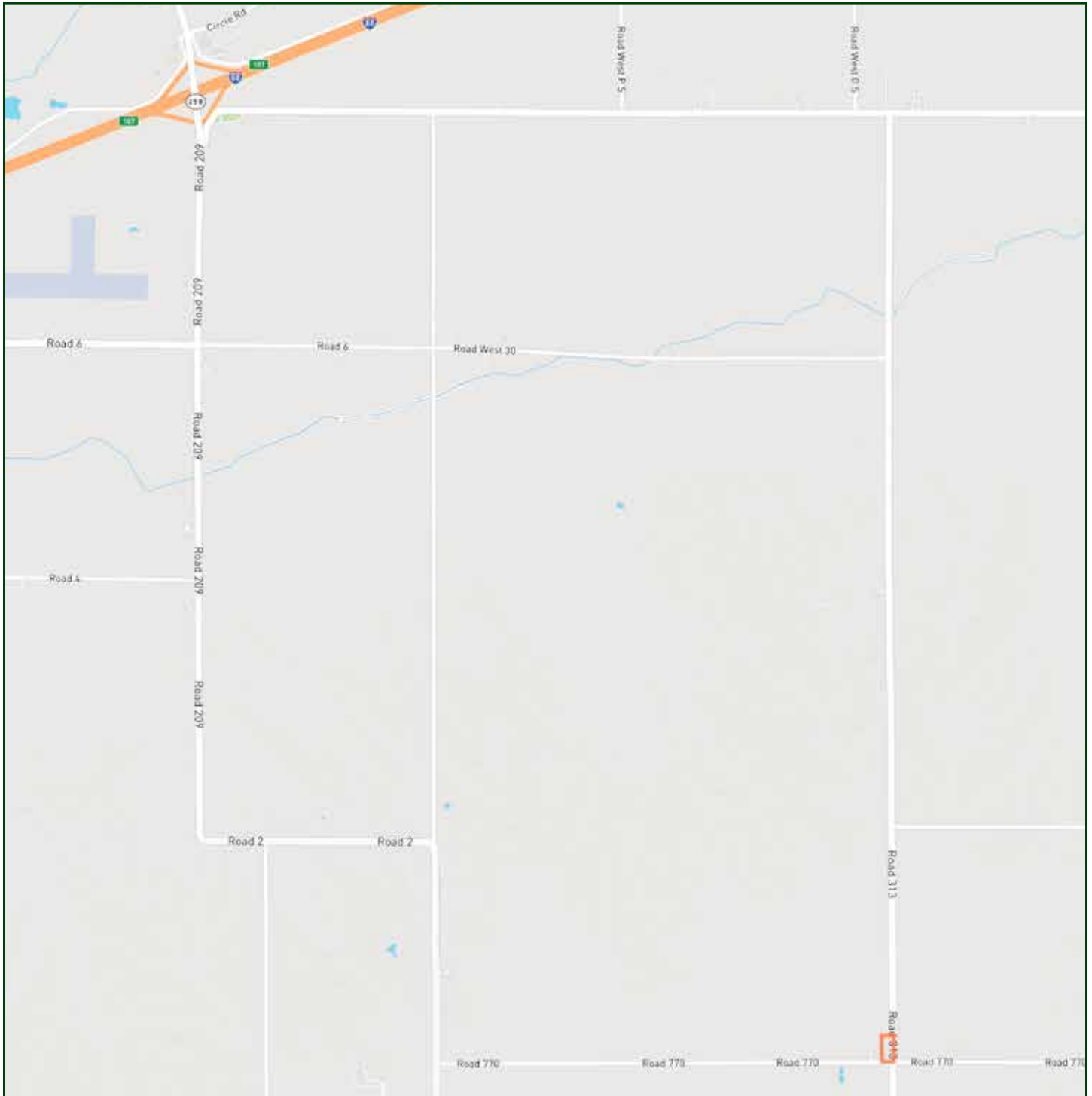
A great 4 bedroom 3 bathroom house located South of Big Springs. This property is in a great location on a good county maintained road. Only 20-30 minutes from Lake McConaughy! There is 1668 sq. feet on the main floor and 1668 sq. feet of finished basement.

Enjoy great views of the surrounding farmland, and the closest neighbor is 2 miles away. A good getaway location yet only ten minutes from I-80. Call Scott to view this property.

All information herein is from sources deemed reliable, however the accuracy is not guaranteed by Lashley Land and Recreational Brokers, Inc., seller or agent. Offering is subject to error, omissions, prior sale, price change or withdrawal without notice.

SCOTT SAULTS
Associate Broker
Scott's Cell: 308-289-1383
Email: scott@lashleyland.com

LOCATION MAP



Boundary lines are estimates - Map for illustration only

AERIAL MAP



Boundary lines are estimates - Map for illustration only

SCOTT SAULTS

Associate Broker

Scott's Cell: 308-289-1383

Email: scott@lashleyland.com

PROPERTY IMAGES



PROPERTY IMAGES



SCOTT SAULTS
Associate Broker
Scott's Cell: 308-289-1383
Email: scott@lashleyland.com

PROPERTY IMAGES





THE LAND EXPERTS YOU CAN TRUST

Contact Information

Office: 308-532-9300

Fax: 308-532-1854

Email: info@lashleyland.com

Website: LashleyLand.com

Mike Lashley, Owner|Broker

Amy Lashley-Johnston, Scott Saults, Skip Marland,
Jordan Maassen, April Good, Steve Farris, Dina Denton,
Jon Farley, Bryan North, Tami Timmerman-Lashley,
Randy Helms, Dodi Osburn, Bill Grant, and Adam Shada

Like us on Facebook

[Facebook.com/LashleyLand](https://www.facebook.com/LashleyLand)

2218 E. Walker Road • North Platte, NE 69101

SCOTT SAULTS

Associate Broker

Scott's Cell: 308-289-1383

Email: scott@lashleyland.com