



AINSWORTH PIVOT IRRIGATED FARM



A 118± acre pivot irrigated farm located SW of Ainsworth.

Co-Listed by:

APRIL GOOD

Associate Broker

April's Cell: 402-322-0770

Email: april@lashleyland.com

DODI OSBURN

Sales Associate

Cell Phone: 402-322-5777

Email: Dodi@lashleyland.com

PROPERTY HIGHLIGHTS

List Price	\$425,000
Location	4 miles West and 2 miles South of Ainsworth, NE
Legal Description	N1/2 SW & SWSW 118.37 Acres 32-30-22
Acres	118±
Taxes - Estimated	\$3,669.54

Property Summary

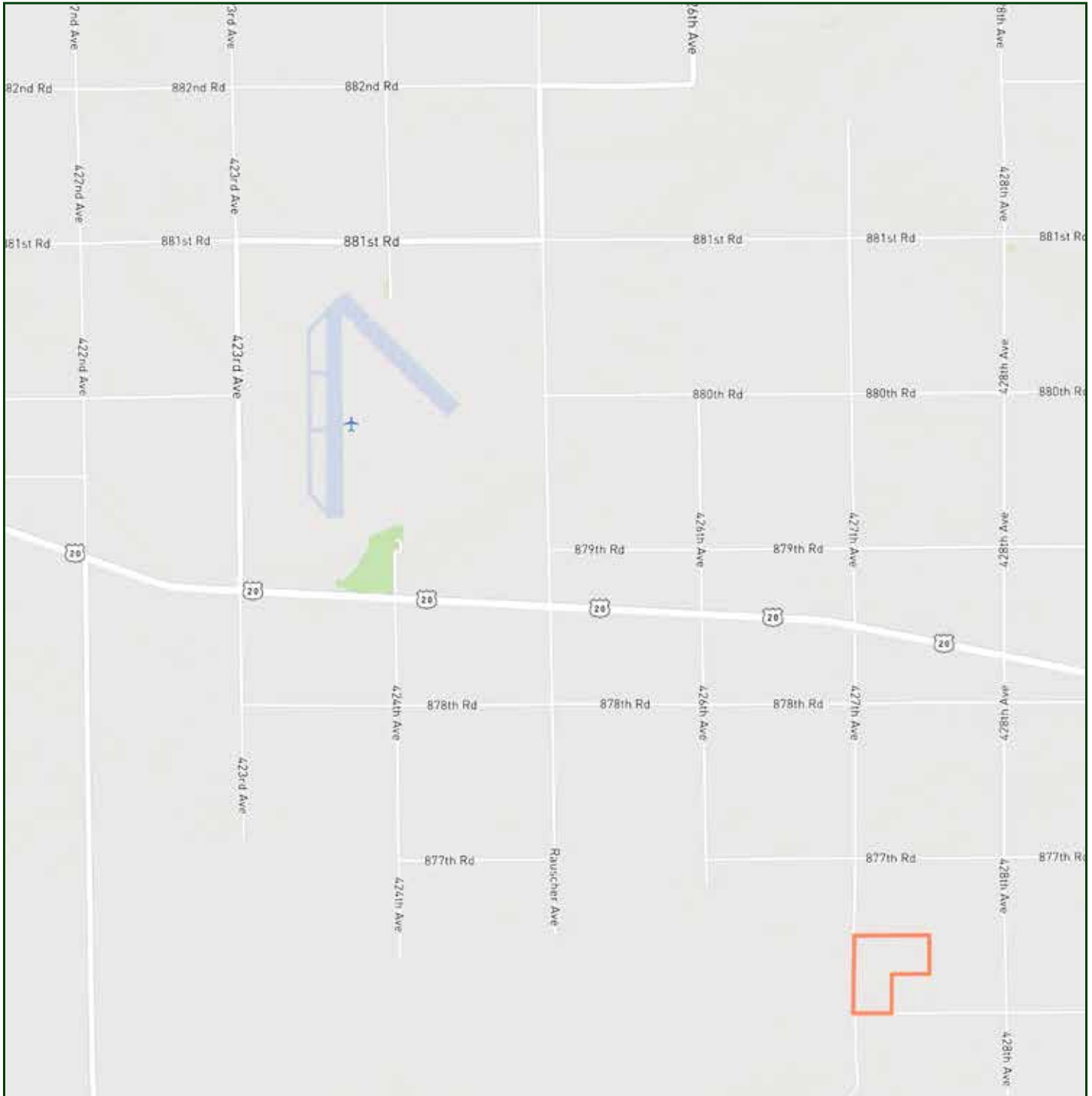
This property has a total of 118.37± acres with 97.5± of well producing irrigated farm ground for sale near Ainsworth. There is an electric, 8000 Valley 8 tower pivot with a diesel engine and stock well. The additional acres can be hayed and is conveniently located 4 miles West and 2 miles South of Ainsworth. Call Dodi Osburn at 402-322-5777 or April Good at 402-322-0770 for more information.

All information herein is from sources deemed reliable, however the accuracy is not guaranteed by Lashley Land and Recreational Brokers, Inc., seller or agent. Offering is subject to error, omissions, prior sale, price change or withdrawal without notice.

APRIL GOOD
Associate Broker
April's Cell: 402-322-0770
Email: april@lashleyland.com

DODI OSBURN
Sales Associate
Cell Phone: 402-322-5777
Email: dodi@lashleyland.com

LOCATION MAP



Boundary lines are estimates - Map for illustration only

AERIAL MAP



Boundary lines are estimates - Map for illustration only

APRIL GOOD

Associate Broker

April's Cell: 402-322-0770

Email: april@lashleyland.com

DODI OSBURN

Sales Associate

Cell Phone: 402-322-5777

Email: dodi@lashleyland.com

PROPERTY IMAGES



PROPERTY IMAGES



APRIL GOOD
Associate Broker
April's Cell: 402-322-0770
Email: april@lashleyland.com

DODI OSBURN
Sales Associate
Cell Phone: 402-322-5777
Email: dodi@lashleyland.com

PROPERTY IMAGES





THE REAL ESTATE EXPERTS YOU CAN TRUST

Contact Information

Office: 308-532-9300

Fax: 308-532-1854

Email: info@lashleyland.com

Website: LashleyLand.com

Mike Lashley, Owner|Broker

Amy Lashley-Johnston, Scott Saults, Skip Marland, Jordan Maassen,
April Good, Mahaila Botts, Steve Farris, Jon Farley,
Bryan North, Tami Timmerman-Lashley,
Randy Helms, Dodi Osburn, and Liz Skov

Like us on Facebook

[Facebook.com/LashleyLand](https://www.facebook.com/LashleyLand)

2218 E. Walker Road • North Platte, NE 69101

Co-Listed by:

APRIL GOOD

Associate Broker

April's Cell: 402-322-0770

Email: april@lashleyland.com

DODI OSBURN

Sales Associate

Cell Phone: 402-322-5777

Email: Dodi@lashleyland.com