



BRADY I-80 EXIT COMMERCIAL BUILDING



An excellent commercial opportunity located directly off of Interstate 80 in Brady.

JORDAN MAASSEN

Sales Associate

Cell Phone: 308-530-8463

Email: Jordan@lashleyland.com

PROPERTY HIGHLIGHTS

| | |
|--------------------------|--------------------------------|
| List Price | \$125,000 |
| Location | Brady I-80 Interchange |
| Legal Description | PT.SW1/4SW1/4 14-12-27 2.69 A. |
| Acres | 2.69± Total Acres |
| Taxes - Estimated | TBD by survey |

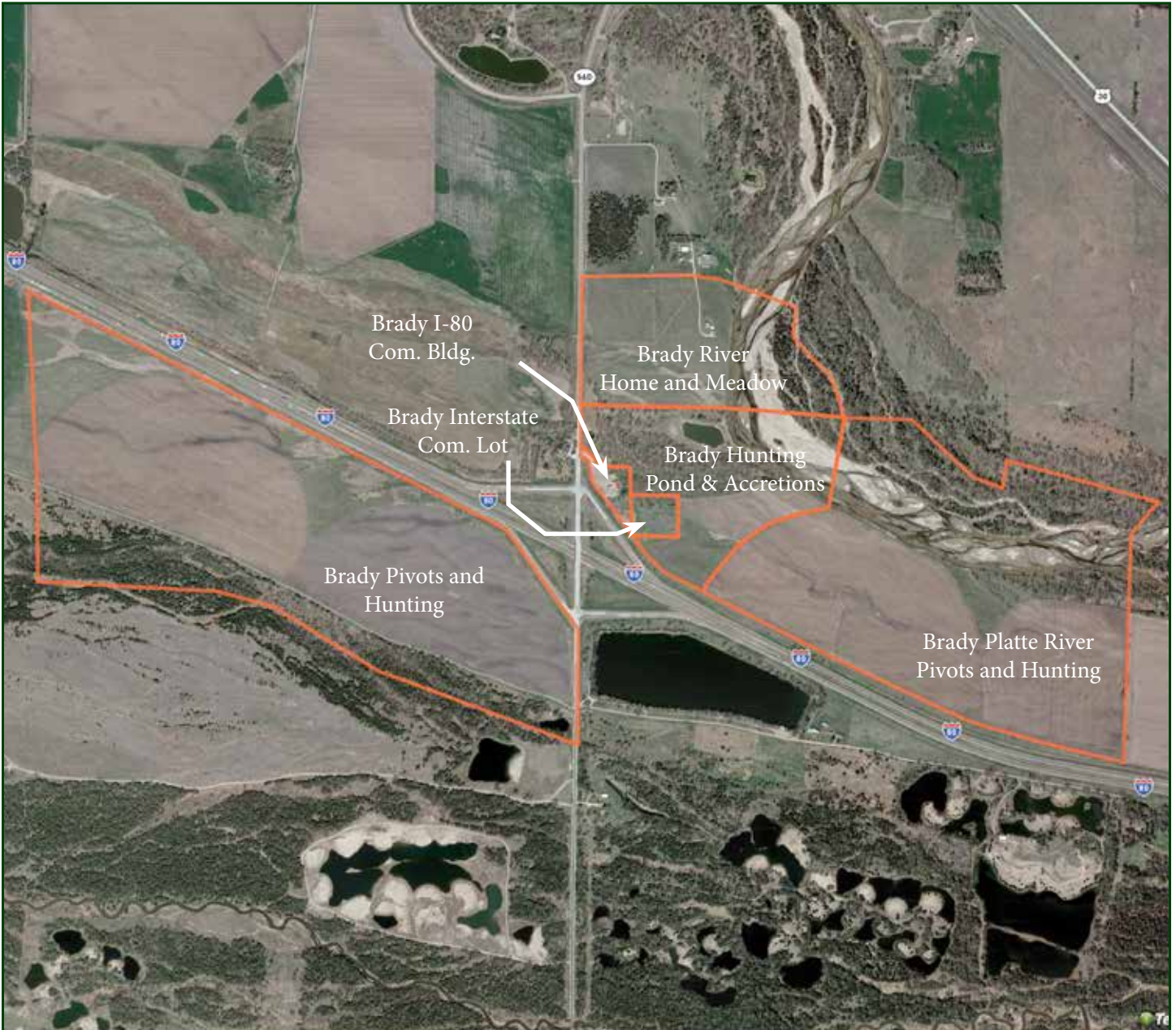
Property Summary

This property has location and opportunity written all over it. This building was once used as a gas station and Dairy Queen. With access directly off of I-80 and excellent signage opportunity, your business ideas and dreams can easily become your reality. With just over 2 acres the possibilities are endless. This building is being sold in "As is" condition.

All information herein is from sources deemed reliable, however the accuracy is not guaranteed by Lashley Land and Recreational Brokers, Inc., seller or agent. Offering is subject to error, omissions, prior sale, price change or withdrawal without notice.

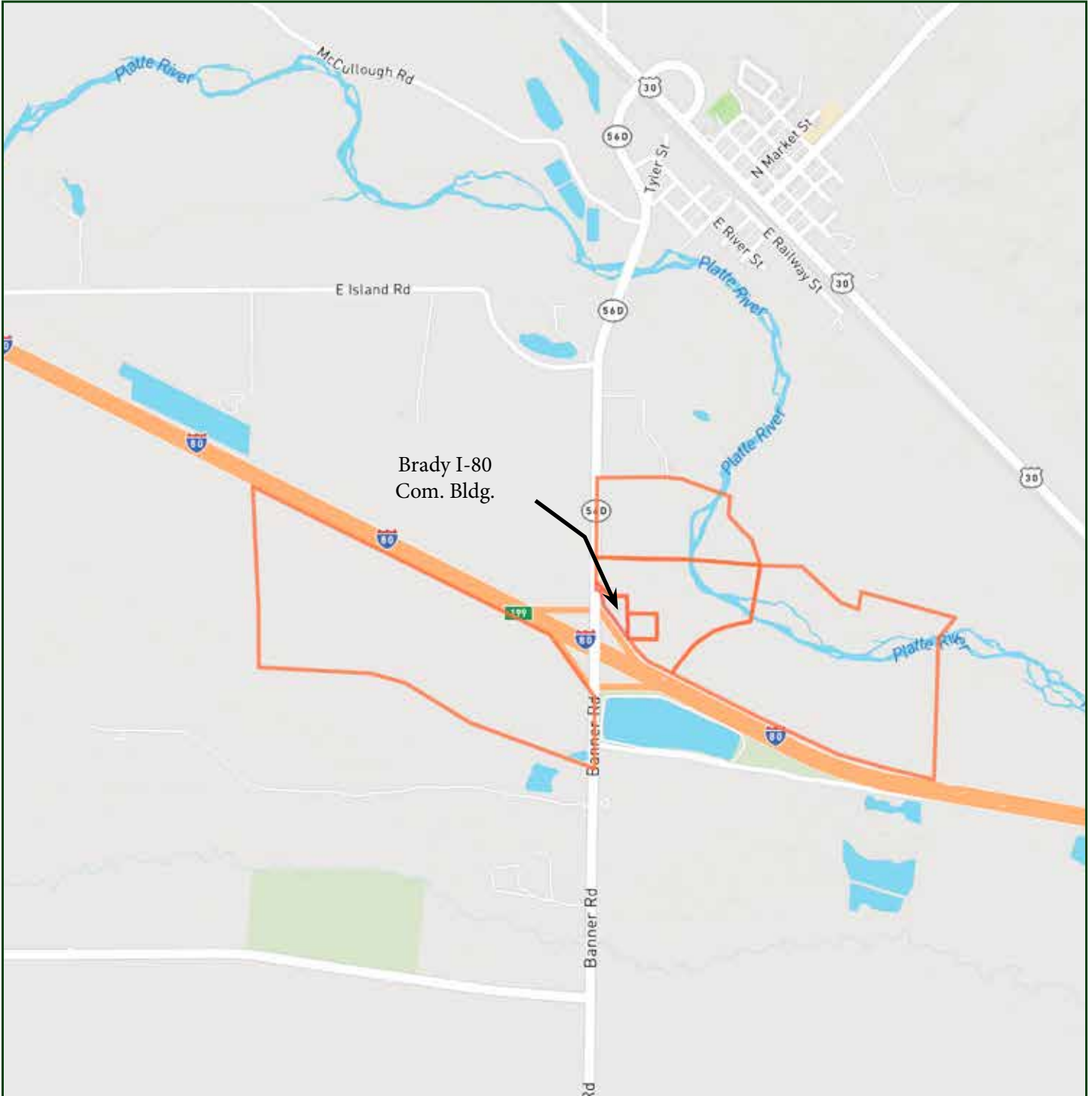
JORDAN MAASSEN
Sales Associate
Cell Phone: 308-530-8463
Email: jordan@lashleyland.com

AERIAL MAP



Boundary lines are estimates - Map for illustration only

LOCATION MAP



Boundary lines are estimates - Map for illustration only

JORDAN MAASSEN

Sales Associate

Cell Phone: 308-530-8463

Email: jordan@lashleyland.com

PROPERTY IMAGES



PROPERTY IMAGES



JORDAN MAASSEN
Sales Associate
Cell Phone: 308-530-8463
Email: jordan@lashleyland.com

PROPERTY IMAGES





THE LAND EXPERTS YOU CAN TRUST

Contact Information

Office: 308-532-9300

Fax: 308-532-1854

Email: info@lashleyland.com

Website: LashleyLand.com

Mike Lashley, Owner|Broker

Amy Lashley-Johnston, Scott Saults, Skip Marland, Jordan Maassen,
April Good, Mahaila Botts, Steve Farris, Jon Farley,
Bryan North, Tami Timmerman-Lashley,
Randy Helms, Dodi Osburn, and Liz Skov

Like us on Facebook

[Facebook.com/LashleyLand](https://www.facebook.com/LashleyLand)

2218 E. Walker Road • North Platte, NE 69101

JORDAN MAASSEN

Sales Associate

Cell Phone: 308-530-8463

Email: Jordan@lashleyland.com