

**612 S. WILLOW ST.
NORTH PLATTE, NE**



A charming and well-maintained 1930's home.

TAMI TIMMERMAN-LASHLEY

Residential Specialist

Tami's Cell: 308-660-9468

Email: tami@lashleyland.com

PROPERTY HIGHLIGHTS

List Price	\$135,000	\$130,000
Location	612 S. Willow St., North Platte, NE	
Legal Description	Residence Park Sub. 3 20	
Taxes - Estimated	\$1,953	

Property Summary

This bungalow style home has plenty of charm with high ceilings and original hardwood flooring throughout the main level. The home features 1,792 sqft with a partially finished basement, and plenty of updates. Spend cozy nights in with a new thermostatically controlled gas fireplace surrounded by shiplap and beautiful stack stone. This home is very energy efficient. There are 3 new triple pane windows upstairs, one is a large triple pane picture window. All but 3 windows in the home are new double pane windows. There are two bedrooms upstairs, and an additional bedroom in the basement with an egress window. There is easy access to plumbing for another bathroom.

The backyard is fully fenced with a new deck, patio, and landscaping. The hot tub also goes with the house. The front porch has brand new decking. There is a detached 1.5 car garage with a shop area. This home is turnkey with new paint inside and out, and is in a great location close to downtown shopping, schools, the hospital, and Walmart. This house is a must see and priced to sell! Call today to schedule a showing.

All information herein is from sources deemed reliable, however the accuracy is not guaranteed by Lashley Land and Recreational Brokers, Inc., seller or agent. Offering is subject to error, omissions, prior sale, price change or withdrawal without notice.

TAMI TIMMERMAN-LASHLEY

Residential Specialist

Tami's Cell: 308-660-9468

Email: tami@lashleyland.com

LOCATION MAP



Boundary lines are estimates - Map for illustration only

AERIAL MAP



Boundary lines are estimates - Map for illustration only

TAMI TIMMERMAN-LASHLEY

Residential Specialist

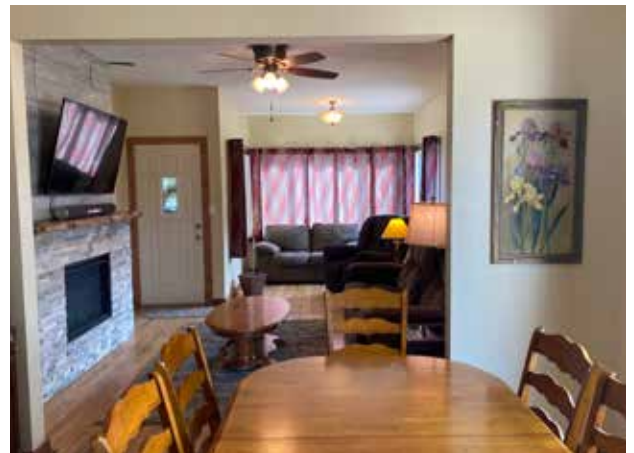
Tami's Cell: 308-660-9468

Email: tami@lashleyland.com

PROPERTY IMAGES



PROPERTY IMAGES



TAMI TIMMERMAN-LASHLEY

Residential Specialist

Tami's Cell: 308-660-9468

Email: tami@lashleyland.com

PROPERTY IMAGES





THE REAL ESTATE EXPERTS YOU CAN TRUST

Contact Information

Office: 308-532-9300

Fax: 308-532-1854

Email: info@lashleyland.com

Website: LashleyLand.com

Mike Lashley, Owner|Broker

Amy Lashley-Johnston, Scott Saults, Skip Marland, Jordan Maassen,
April Good, Mahaila Botts, Steve Farris, Jon Farley,
Bryan North, Tami Timmerman-Lashley,
Randy Helms, Dodi Osburn, and Liz Skov

Like us on Facebook

[Facebook.com/LashleyLand](https://www.facebook.com/LashleyLand)

2218 E. Walker Road • North Platte, NE 69101

TAMI TIMMERMAN-LASHLEY

Residential Specialist

Tami's Cell: 308-660-9468

Email: tami@lashleyland.com