

DAKOTAH ACRES ADDITION

FINAL PLAT

W 1/2 OF THE NW 1/4
SECTION 13, T9N, R5E
(NOT PART OF PLAT)

LOT 6 OF THE NW 1/4
SECTION 13, T9N, R5E
(NOT PART OF PLAT)

LOT 8 OF THE NW 1/4
SECTION 13, T9N, R5E
(NOT PART OF PLAT)

N89°33'16"W
658.93'M
658.95'R1

NW COR W 1/2, E 1/2 OF THE SW 1/4 OF
SEC. 13, T9N, R5E
FD. CAPPED REBAR

S89°33'06"E
658.96' M
658.95' R1

NE COR W 1/2, E 1/2
OF THE SW 1/4
OF SEC. 13, T9N, R5E
FD. CAPPED REBAR

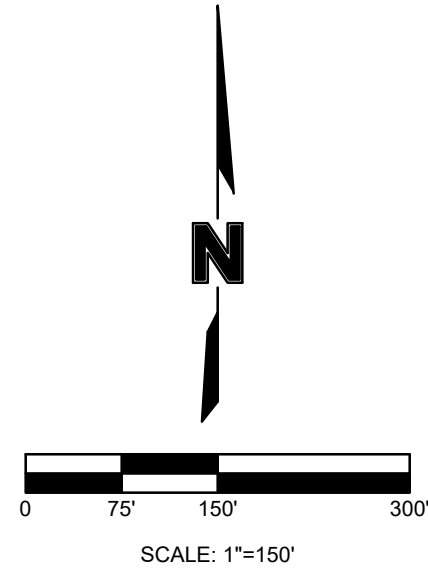
NE COR E 1/2, E 1/2 OF THE SW 1/4 OF
SEC. 13, T9N, R5E
FD. 2" ALUM. CAP

SW 1.35' TO 1" PIPE
W 0.50' TO N-S FENCE LINE
S 4.0' TO E-W FENCE LINE
SSW 3.75' TO NEAR FACE NEW
C.F.P.

W 4.00' TO 1" PIPE
N 32.99' TO 3/4" REBAR
S 48.60" TO 5/8" REBAR
WEST 1" TO N-S FENCE LINE

LEGEND

- ⊗ = FD. CAPPED REBAR
- ⊕ = FD. SECTION CORNER AS NOTED IN TIES
- △ = TEMPORARY POINT
- = SET 5/8" x 24" REBAR W/ LS695 CAP
- M = Meas. distance
- R1 = Record distance - Recorded Survey AA-22653
- R2 = Record distance - Recorded Survey AA-20826



E 1/2 OF THE W 1/2 OF THE SW 1/4
SECTION 13, T9N, R5E
(NOT PART OF PLAT)

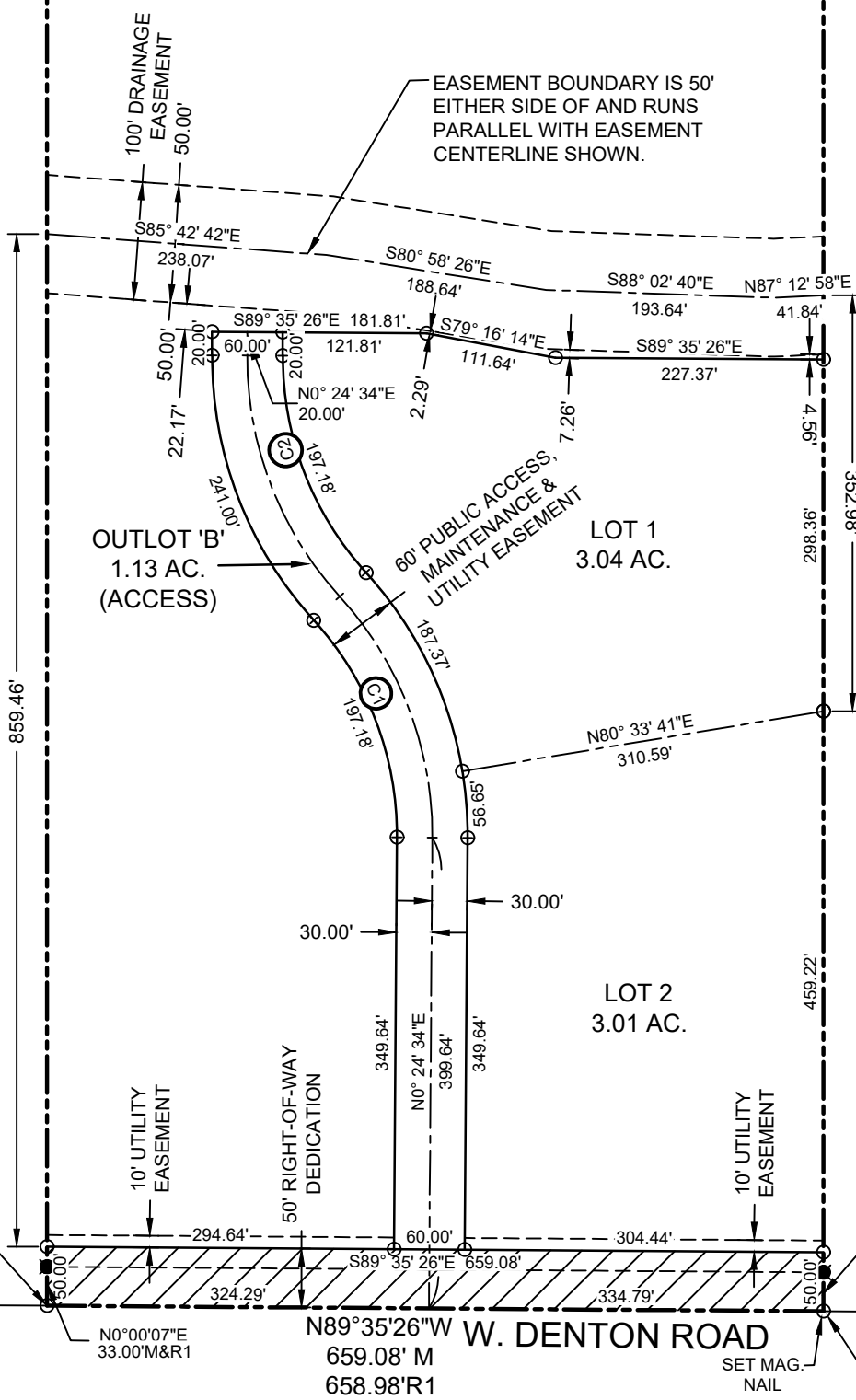
OUTLOT 'A'
32.04 AC.
(AGRICULTURAL USES)

E 1/2 OF THE E 1/2 OF THE SW 1/4
SECTION 13, T9N, R5E
(NOT PART OF PLAT)

N0°00'03"E
2641.27'M
2641.44'R2

N00°00'07"E 2642.13' M 2642.20' R1
2592.13'

1834.10'
S00°00'02"E 2641.68' M 2641.74' R1



CURVE DATA						
CURVE #	RADIUS	ANGLE	TANGENT	LENGTH	CH DIST	CH BRG
C1	300.00'	42°50'00"	117.67'	224.28'	219.09'	N21°00'26"W
C2	300.00'	42°50'00"	117.67'	224.28'	219.09'	N21°00'26"W

SW COR OF SEC. 13, T9N, R5E
FD. 2" ALUM. CAP

SW COR W 1/2, E 1/2 OF THE SW 1/4 OF
SEC. 13, T9N, R5E
SET MAG. NAIL

NW 49.90' TO 3/4" PIPE
N 32.90' TO 1" PIPE
NE 47.23' TO 3/4" PIPE
IN LINE WITH FENCE LINE NORTH

N 33.00' TO CAPPED REBAR
NE 43.91' TO NAIL IN TOP FENCE POST
NW 62.90' TO NAIL IN TOP FENCE POST

SE COR E 1/2, E 1/2 OF THE SW 1/4
COR. SEC. 13, T9N, R5E
FD. 2" ALUM. CAP

N 49.89' TO 1" PIPE
NW 54.49' TO 3/4" PIPE
NE 55.51' TO 1" PIPE
IN LINE WITH FENCE LINE NORTH

1317.96'R1
1317.93' M
N89°35'26"W

POINT OF
BEGINNING

N0°00'07"E
33.00'M&R1

N89°35'26"W
659.08' M
658.98'R1

N0°00'02"E
33.00'M&R1

658.85' M
658.98' R1

N89°35'26"W

SE COR W 1/2, E 1/2 OF THE SW 1/4
COR. SEC. 13, T9N, R5E