

BUSHNELL PIVOTS



Two irrigated quarters with great access.

SCOTT SAULTS

Associate Broker

Scott's Cell: 308-289-1383

Email: scott@lashleyland.com

PROPERTY HIGHLIGHTS

List Price	\$498,000
Location	7 miles north of Bushnell, NE
Legal Description	East 1/2 7-16-57 Kimball County, NE
Acres	Grass: 14.64± Drycrop: 42.41± Irrigated: 254.26± Road: 7.99± TOTAL: 319.3±
Taxes - Estimated	\$7,764.16

Property Summary

Two irrigated quarters located 7 miles north of Bushnell, NE with great access on a good county road. Total irrigated acres is 254. There is one well that services both pivots. Current tenant is on a share basis for landlord income. There is an established shelter belt on the north side of the North Pivot and would be good protection for livestock winter grazing of stalks or crop residue. Call Scott for more information.

All information herein is from sources deemed reliable, however the accuracy is not guaranteed by Lashley Land and Recreational Brokers, Inc., seller or agent. Offering is subject to error, omissions, prior sale, price change or withdrawal without notice.

SCOTT SAULTS
Associate Broker
Scott's Cell: 308-289-1383
Email: scott@lashleyland.com

PROPERTY HIGHLIGHTS

Well Information

Registration# Well ID Permit Number	Use Sta- tus	County Name NRD Name Well Lo- cation Footage Latitude Longitude	Completion Date Filing Date Decommission Date Times Re- placed Online Regis- tration ID (NO- LID)	Acres Irrigated Gallons/Min- ute Static Level Pumping Level Series	Pump Column Diameter Pump Depth Well Depth	Owner's Name Owner's ID Address
G-138819 WellID: 173839 View Details View Logs View Scans	I A	Kimball South Platte 16N 57W 7 SENE 2634N 845E Map It	1/1/1986 2/15/2006 ---	265.5 1000 gpm --- --- PRO	--- --- ---	Curtis Bahl OwnerID: 110543 4810 Hwy 5 Moha- ll ND 58761

LOCATION MAP



Boundary lines are estimates - Map for illustration only

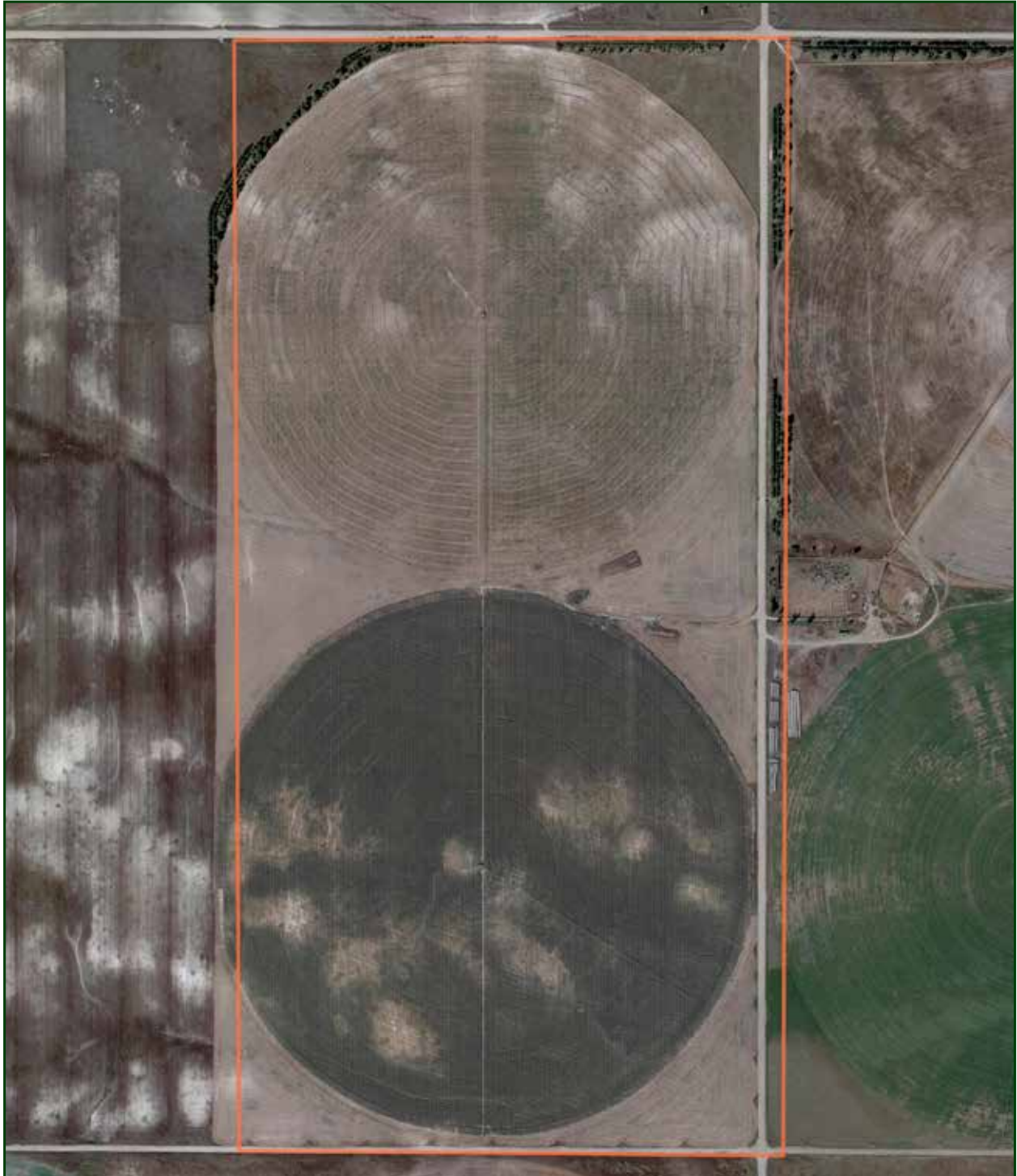
SCOTT SAULTS

Associate Broker

Scott's Cell: 308-289-1383

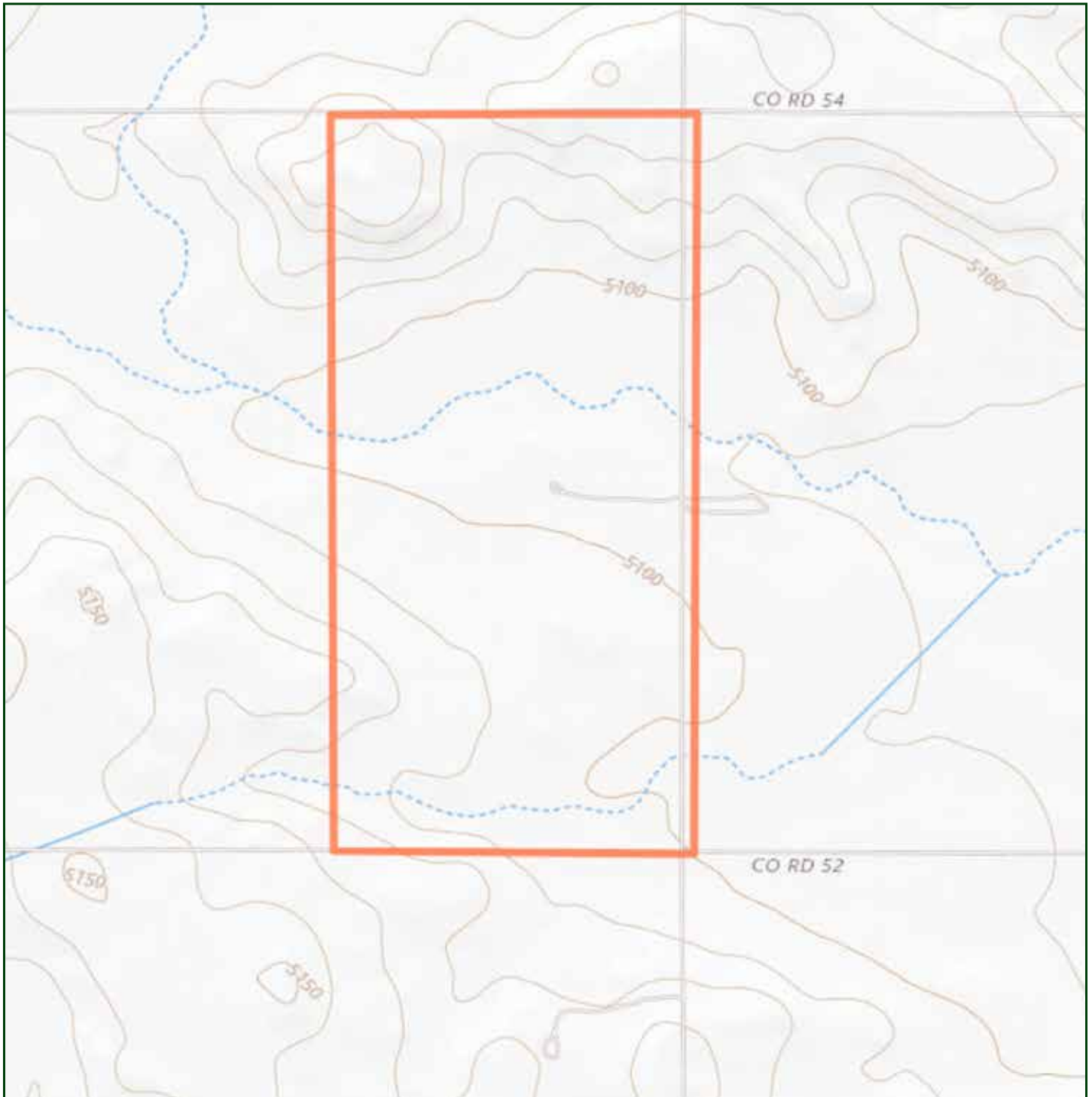
Email: scott@lashleyland.com

AERIAL MAP



Boundary lines are estimates - Map for illustration only

TOPO MAP



Boundary lines are estimates - Map for illustration only

SCOTT SAULTS

Associate Broker

Scott's Cell: 308-289-1383

Email: scott@lashleyland.com

PROPERTY IMAGES



PROPERTY IMAGES



SCOTT SAULTS
Associate Broker
Scott's Cell: 308-289-1383
Email: scott@lashleyland.com

PROPERTY IMAGES



PROPERTY IMAGES



SCOTT SAULTS
Associate Broker
Scott's Cell: 308-289-1383
Email: scott@lashleyland.com

PROPERTY IMAGES





THE LAND EXPERTS YOU CAN TRUST

Contact Information

Office: 308-532-9300

Fax: 308-532-1854

Email: info@lashleyland.com

Website: LashleyLand.com

Mike Lashley, Owner|Broker

Amy Lashley-Johnston, Scott Saults, Skip Marland, Jordan Maassen,
April Good, Mahaila Botts, Steve Farris, Jon Farley,
Bryan North, Tami Timmerman-Lashley,
Randy Helms, Dodi Osburn, and Liz Skov

Like us on Facebook

[Facebook.com/LashleyLand](https://www.facebook.com/LashleyLand)

2218 E. Walker Road • North Platte, NE 69101

SCOTT SAULTS

Associate Broker

Scott's Cell: 308-289-1383

Email: scott@lashleyland.com