



NW KEITH COUNTY GRASS



A great section of quality grassland near Lewellen, NE.

JORDAN MAASSEN

Sales Associate

Cell Phone: 308-530-8463

Email: Jordan@lashleyland.com

PROPERTY HIGHLIGHTS

List Price **\$450,000**

Location Northeast of Lewellen, NE

Legal Description

All Section 8-Township 16-Range 41 West of the 6th P.M., Keith County, Nebraska

Acres 634.83±

Taxes - Estimated **\$3,740.56**

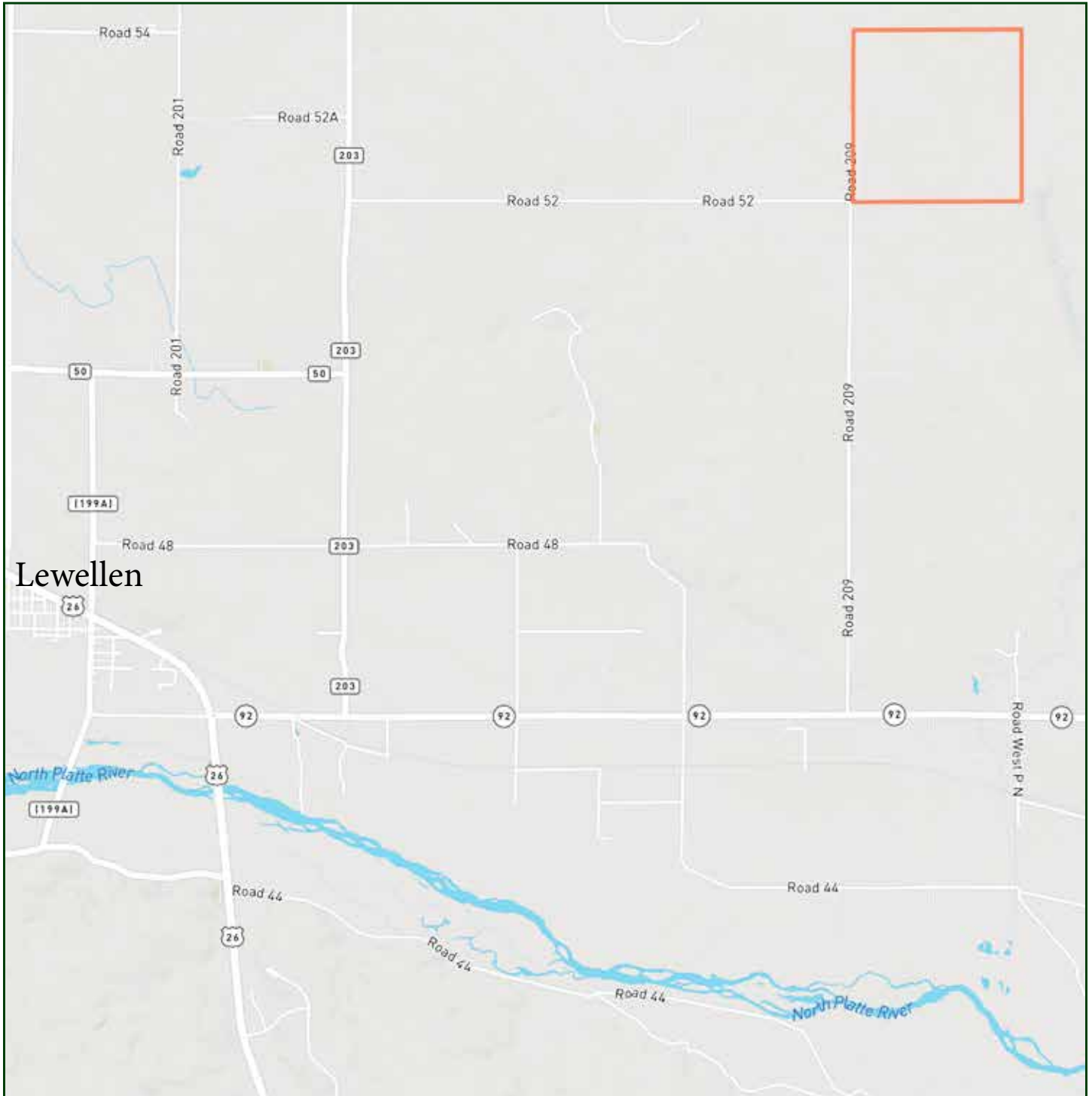
Property Summary

Here is a nice and well kept section of quality grassland located in the Northwest corner of Keith County. This property has 2 watering sites and is cross fenced from West to East in the center of the Section. The North water site is a windmill set up and the South site is an electric submersible well. There is good county road access to the property and rural electric service. The Sandhills of Nebraska are known for their excellent grasses and this makes the perfect summer pasture to graze for your cow/calf operation. This parcel of land lies on the Garden County and Keith County lines and is located just to the Northeast of Lewellen, Nebraska. The area has excellent deer hunting as well! Don't miss out on this opportunity to own a nice section of land in Keith County Nebraska.

All information herein is from sources deemed reliable, however the accuracy is not guaranteed by Lashley Land and Recreational Brokers, Inc., seller or agent. Offering is subject to error, omissions, prior sale, price change or withdrawal without notice.

JORDAN MAASSEN
Sales Associate
Cell Phone: 308-530-8463
Email: jordan@lashleyland.com

LOCATION MAP



Boundary lines are estimates - Map for illustration only

AERIAL MAP



Boundary lines are estimates - Map for illustration only

JORDAN MAASSEN

Sales Associate

Cell Phone: 308-530-8463

Email: jordan@lashleyland.com

EXTENDED AERIAL MAP



Boundary lines are estimates - Map for illustration only

PROPERTY IMAGES

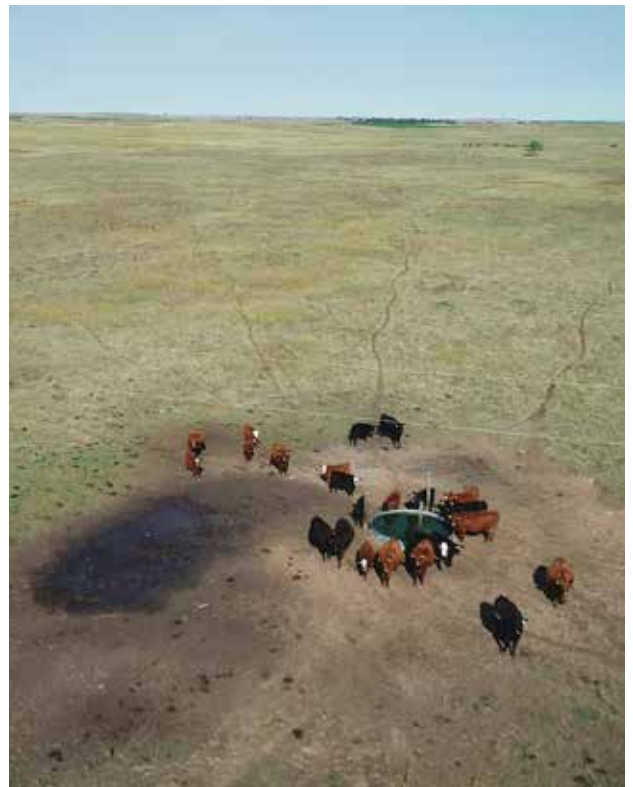


JORDAN MAASSEN
Sales Associate
Cell Phone: 308-530-8463
Email: jordan@lashleyland.com

PROPERTY IMAGES



PROPERTY IMAGES



JORDAN MAASSEN
Sales Associate
Cell Phone: 308-530-8463
Email: jordan@lashleyland.com

PROPERTY IMAGES

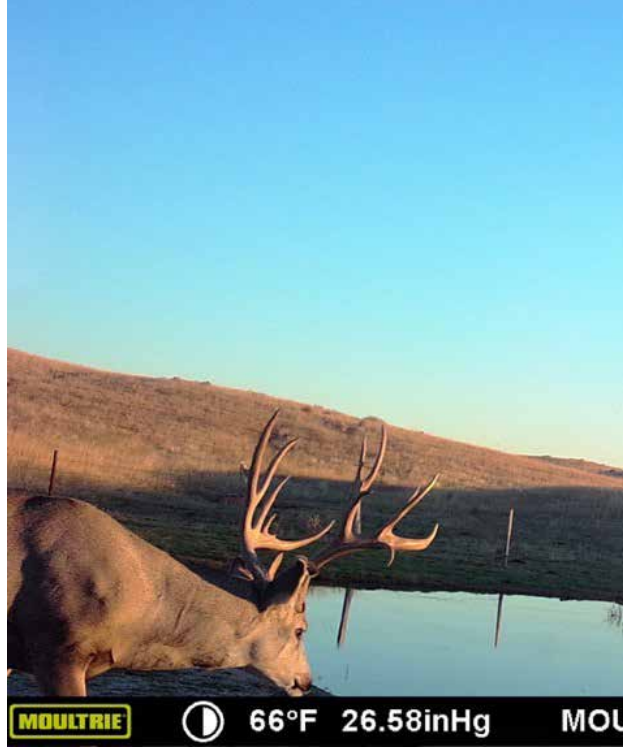


PROPERTY IMAGES



JORDAN MAASSEN
Sales Associate
Cell Phone: 308-530-8463
Email: jordan@lashleyland.com

PROPERTY IMAGES





THE LAND EXPERTS YOU CAN TRUST

Contact Information

Office: 308-532-9300

Fax: 308-532-1854

Email: info@lashleyland.com

Website: LashleyLand.com

Mike Lashley, Owner|Broker

Amy Lashley-Johnston, Scott Saults, Skip Marland, Jordan Maassen,
April Good, Mahaila Botts, Steve Farris, Jon Farley,
Bryan North, Tami Timmerman-Lashley,
Randy Helms and Liz Skov

Like us on Facebook

[Facebook.com/LashleyLand](https://www.facebook.com/LashleyLand)

2218 E. Walker Road • North Platte, NE 69101

JORDAN MAASSEN

Sales Associate

Cell Phone: 308-530-8463

Email: Jordan@lashleyland.com