



FILLMORE COUNTY HUNTERS HIDEAWAY



A perfect hunting getaway with 16.7± acres close to Geneva, NE.

BRYAN NORTH

Sales Associate

Cell Phone: 308-325-2858

Email: Bryan@lashleyland.com

PROPERTY HIGHLIGHTS

List Price ~~\$150,000~~ **\$140,000**

Location 1315 Road 15, Geneva, Nebraska

Legal Description

Township 7 North Range 2 West of the 6th PM Section 32
Part of the NENE Less S 100" and Tracts

Acres 16.7±

Taxes - Estimated **\$235.50**

Property Summary

This 16.7+/- acre tract is the perfect place to get away from it all! This acreage is located only 2 miles to the east off of a four lane paved road at Geneva, Nebraska. The location is set up for a weekend hunting spot or a perfect place to build a new home. The property sits right along a small live water creek with lots of timber, and the tract is completely surrounded by cropland, making it the perfect haven for whitetail deer.

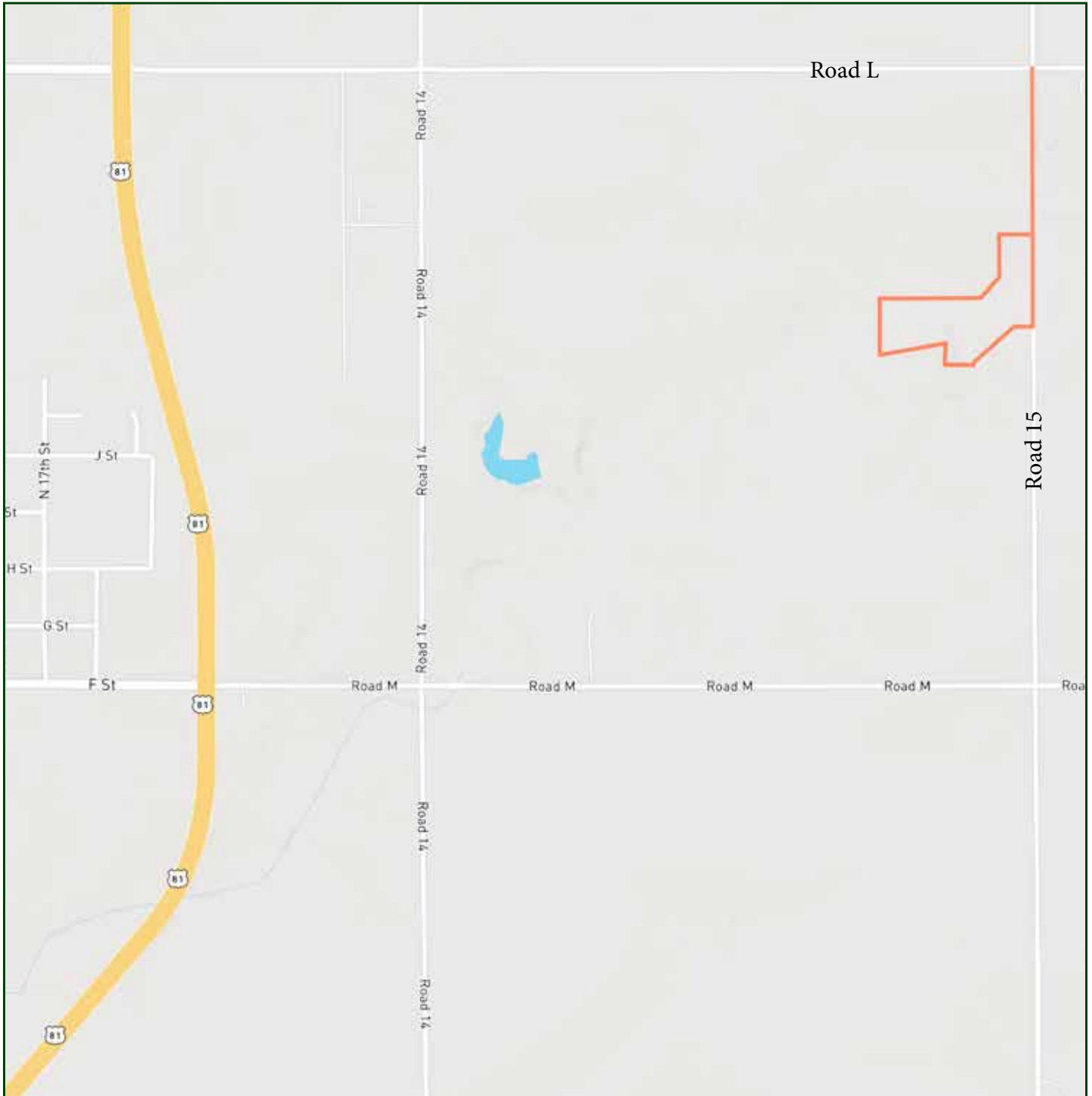
There is a small 8x10 utility shed with a concrete floor and power ran to it. It also has an overhead door and would work great to store your hunting gear or an ATV. There is also a target range, and a small picnic area is set up by the creek as well. The high banks on the southwest side of the property overlook the creek with a fantastic view below.

If you are looking to build a home in the country, this would be an excellent opportunity to be close to town and have established trees with live water and beautiful views.

All information herein is from sources deemed reliable, however the accuracy is not guaranteed by Lashley Land and Recreational Brokers, Inc., seller or agent. Offering is subject to error, omissions, prior sale, price change or withdrawal without notice.

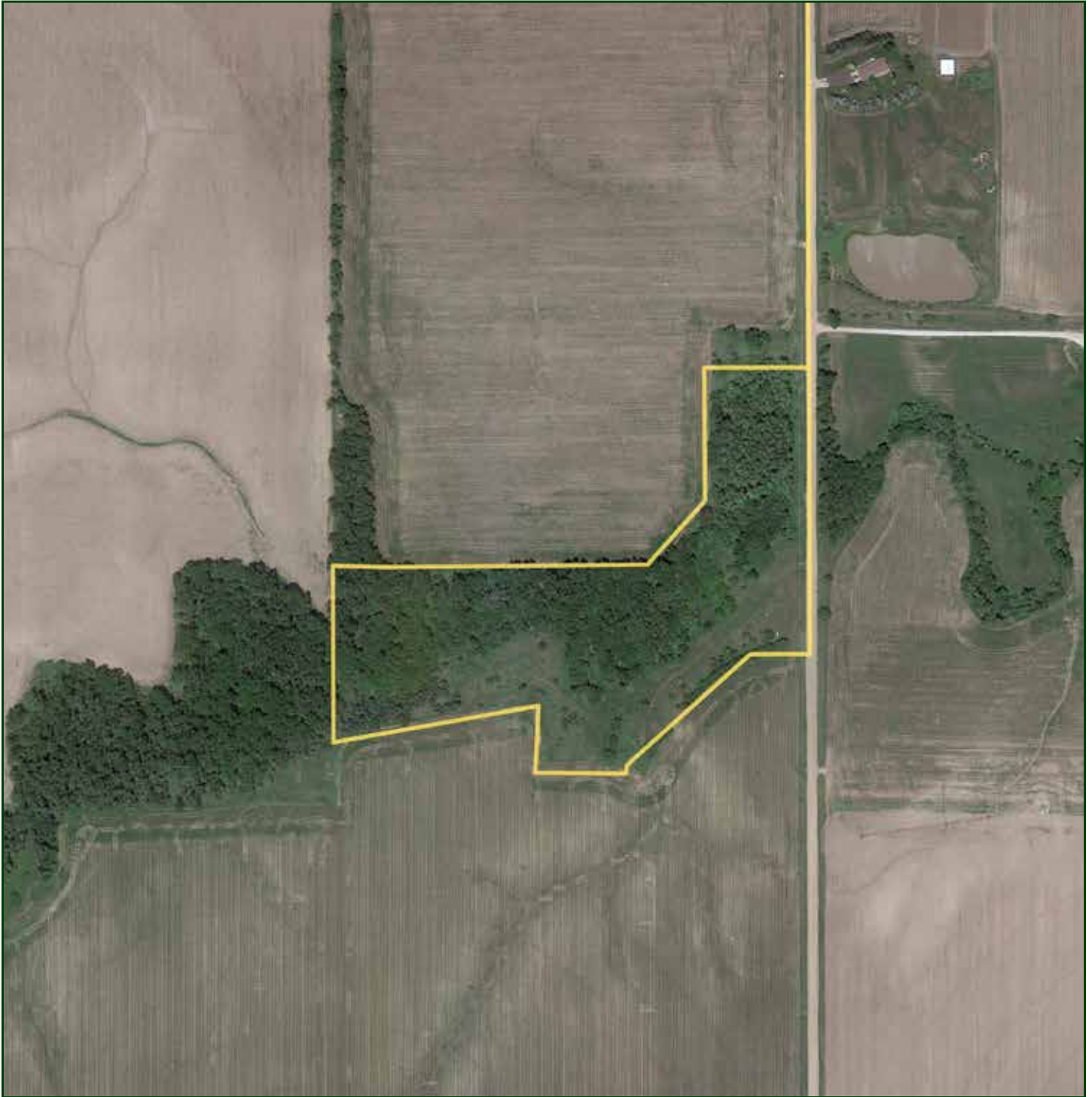
BRYAN NORTH
Sales Associate
Cell Phone: 308-325-2858
Email: bryan@lashleyland.com

LOCATION MAP



Boundary lines are estimates - Map for illustration only

AERIAL MAP



Boundary lines are estimates - Map for illustration only

BRYAN NORTH

Sales Associate

Cell Phone: 308-325-2858

Email: bryan@lashleyland.com

PROPERTY IMAGES



PROPERTY IMAGES



BRYAN NORTH
Sales Associate
Cell Phone: 308-325-2858
Email: bryan@lashleyland.com

PROPERTY IMAGES





THE LAND EXPERTS YOU CAN TRUST

Contact Information

Office: 308-532-9300

Fax: 308-532-1854

Email: info@lashleyland.com

Website: LashleyLand.com

Mike Lashley, Owner|Broker

Amy Lashley-Johnston, Scott Saults, Skip Marland,
Jordan Maassen, April Good, Mahaila Botts, Steve Farris,
Jon Farley, Bryan North, Tami Timmerman-Lashley,
Randy Helms and Liz Skov

Like us on Facebook

[Facebook.com/LashleyLand](https://www.facebook.com/LashleyLand)

2218 E. Walker Road • North Platte, NE 69101

BRYAN NORTH

Sales Associate

Cell Phone: 308-325-2858

Email: Bryan@lashleyland.com