



BRADY CHANNELS WILDLIFE



A perfect hunting hideout with 89± acres Southeast of Maxwell, NE.

MIKE LASHLEY

Owner|Broker

Mike's Cell: 308-530-0134

Email: mike@lashleyland.com

PROPERTY HIGHLIGHTS

List Price	\$256,000
Location	Four miles South and three miles East of Maxwell, NE
Legal Description	Part of SE 1/4 Deded Accretions 14-12-28
Acres	89±
Taxes - Estimated	\$4,100

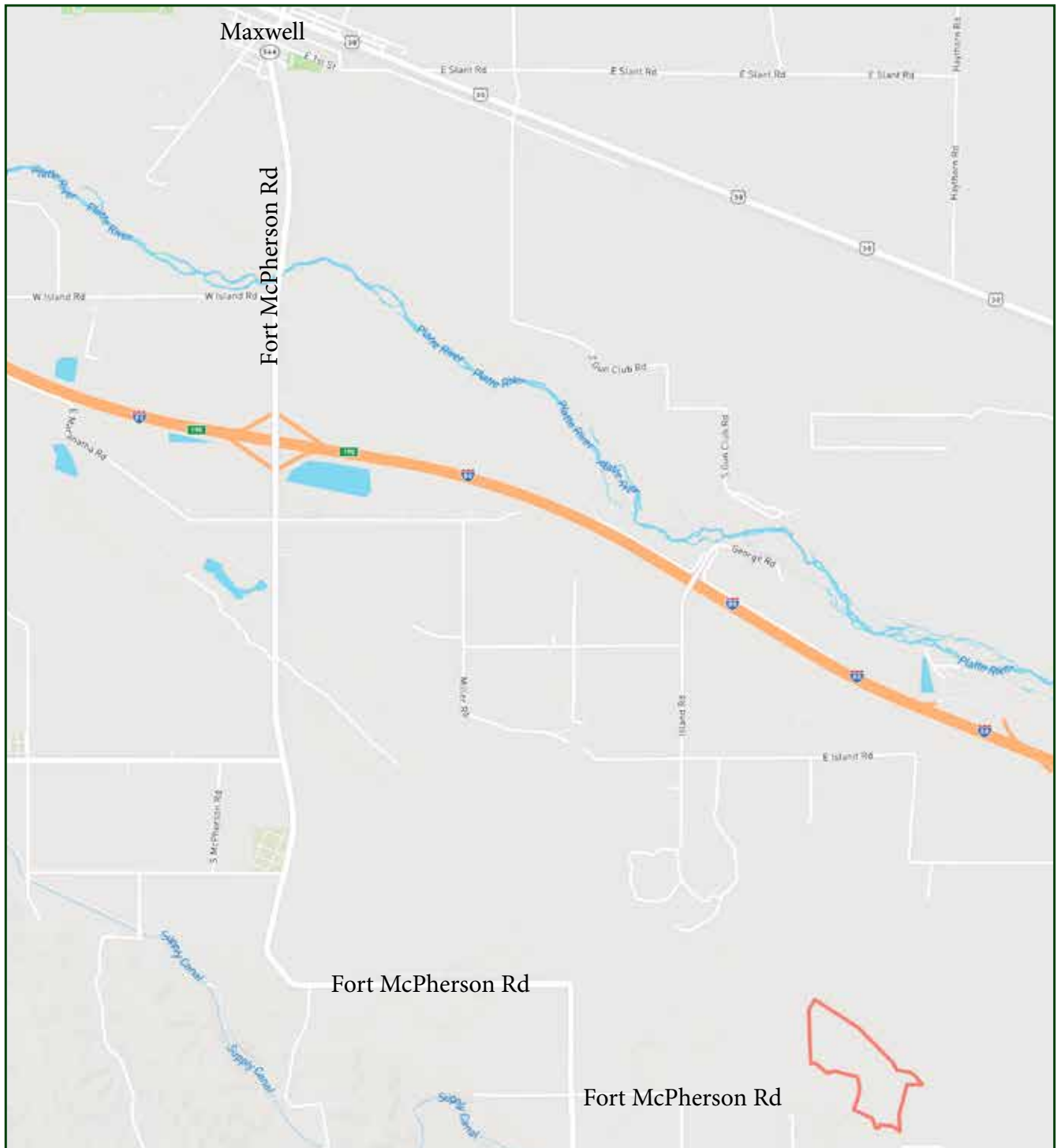
Property Summary

This is a very attractive parcel of Lincoln County accretion ground. This tract includes both sides of a small braided channel of the Platte River. The waters host numerous Mallards in the late season, and the heavily wooded land provides a great amount of shelter for white tail deer and wild turkey. There are good trails cut through the river bottom trees, and numerous places for blinds and tree stands. This is a great opportunity to purchase a hunting hideout with Platte River access.

All information herein is from sources deemed reliable, however the accuracy is not guaranteed by Lashley Land and Recreational Brokers, Inc., seller or agent. Offering is subject to error, omissions, prior sale, price change or withdrawal without notice.

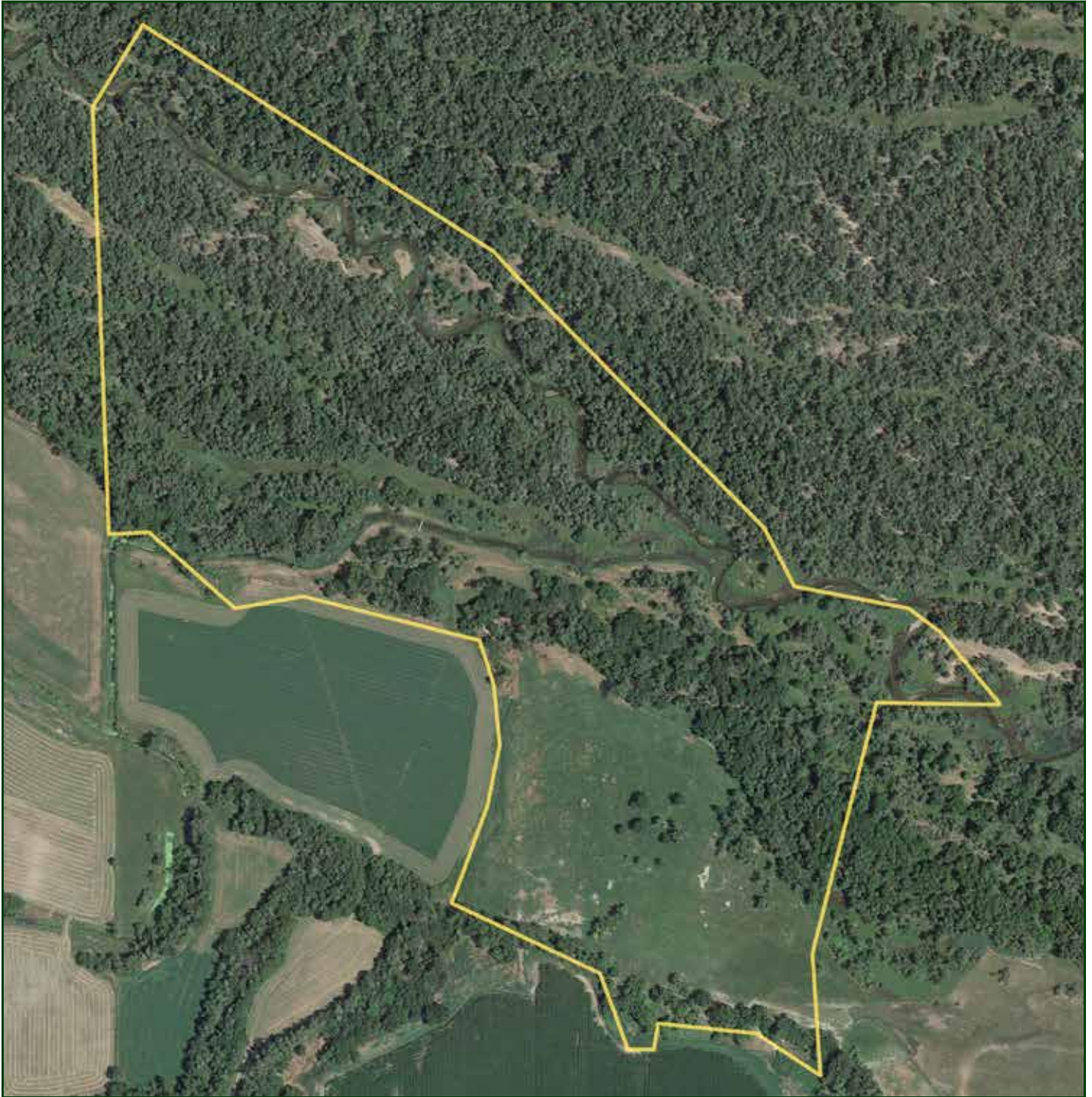
MIKE LASHLEY
Owner|Broker
Mike's Cell: 308-530-0134
Email: mike@lashleyland.com

LOCATION MAP



Boundary lines are estimates - Map for illustration only

AERIAL MAP



Boundary lines are estimates - Map for illustration only

MIKE LASHLEY

Owner|Broker

Mike's Cell: 308-530-0134

Email: mike@lashleyland.com

PROPERTY IMAGES



PROPERTY IMAGES



MIKE LASHLEY
Owner|Broker
Mike's Cell: 308-530-0134
Email: mike@lashleyland.com

PROPERTY IMAGES





THE LAND EXPERTS YOU CAN TRUST

Contact Information

Office: 308-532-9300

Fax: 308-532-1854

Email: info@lashleyland.com

Website: LashleyLand.com

Mike Lashley, Owner|Broker

Amy Lashley-Johnston, Scott Saults, Skip Marland,
Jordan Maassen, April Good, Mahaila Botts, Steve Farris,
Jon Farley, Bryan North, Tami Timmerman-Lashley,
Randy Helms and Liz Skov

Like us on Facebook

[Facebook.com/LashleyLand](https://www.facebook.com/LashleyLand)

2218 E. Walker Road • North Platte, NE 69101

MIKE LASHLEY

Owner|Broker

Mike's Cell: 308-530-0134

Email: mike@lashleyland.com