

**1220 WILLIAM CT.
NORTH PLATTE, NE**



A completely updated home with over 2,000 sqft.

JON FARLEY

Sales Associate

Cell Phone: 308-530-7854

Email: Jon@lashleyland.com

PROPERTY HIGHLIGHTS

List Price	\$299,000	\$265,000
Location	1220 William Court, North Platte, NE	
Legal Description	Southfield 8th Add. 16 2	
Taxes - Estimated	\$4,310.98	

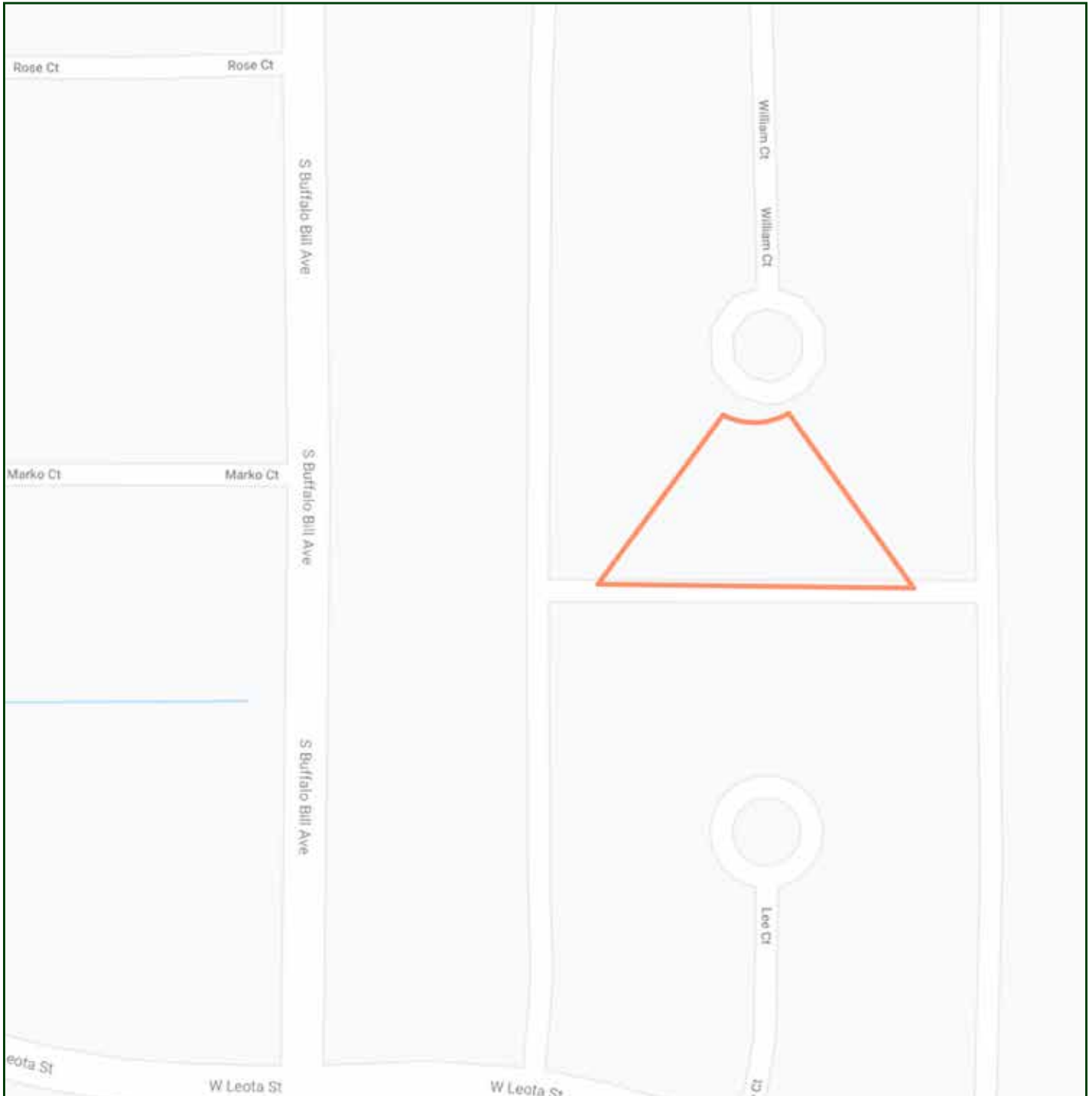
Property Summary

This is a beautiful all brick home that has been completely updated, and is in a great location. This home has room for the family with over 2,000 sqft. of living space with 3 bedrooms and 3.5 bathrooms, and an oversized two car attached garage. This home has an open concept making it feel extra spacious and comfortable. Outside, you can enjoy quiet evenings in the fenced in backyard with a covered patio. Please make sure to read all of the updates and features in the document attached to the sellers disclosure.

All information herein is from sources deemed reliable, however the accuracy is not guaranteed by Lashley Land and Recreational Brokers, Inc., seller or agent. Offering is subject to error, omissions, prior sale, price change or withdrawal without notice.

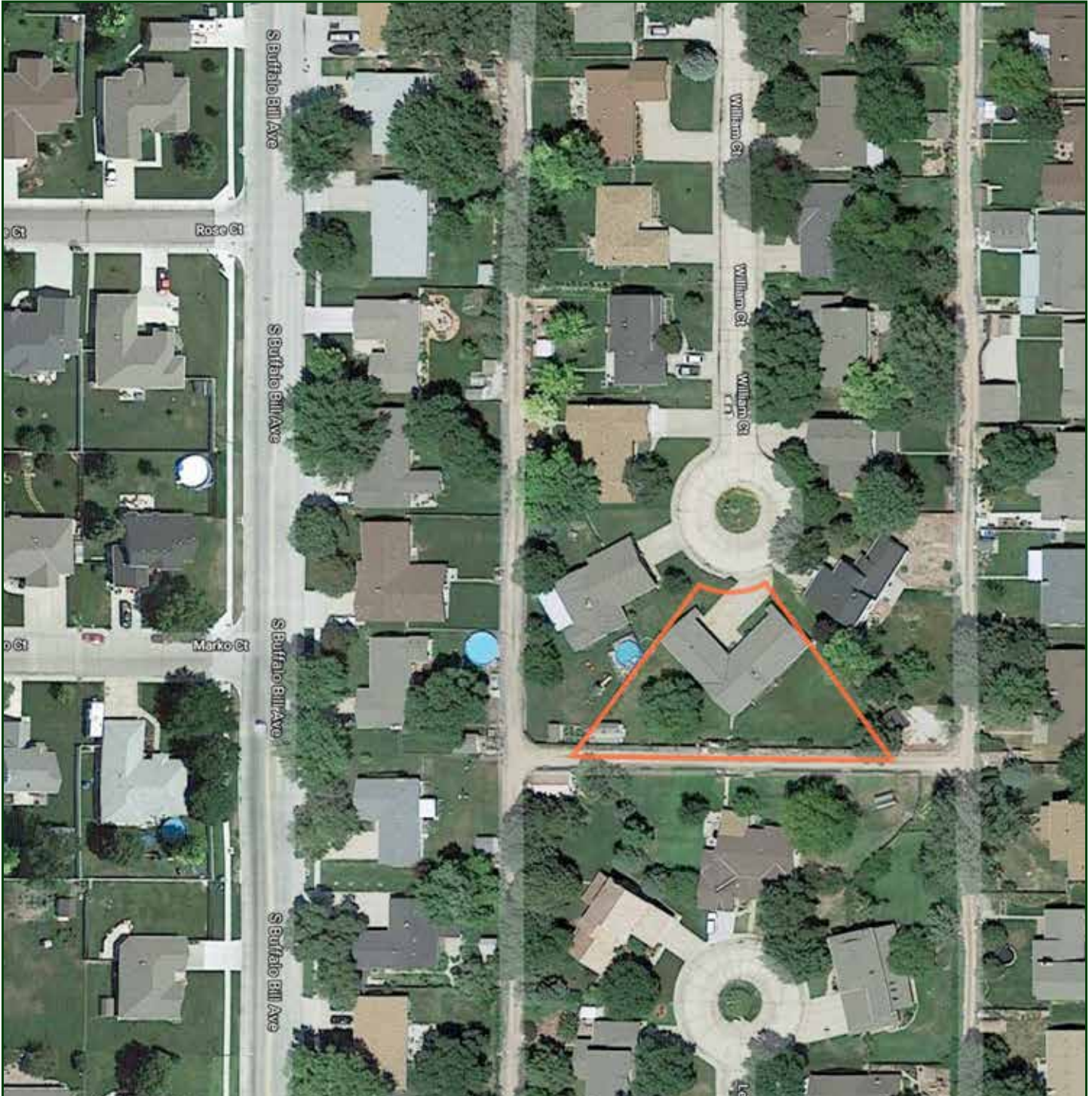
JON FARLEY
Sales Associate
Cell Phone: 308-530-7854
Email: jon@lashleyland.com

LOCATION MAP



Boundary lines are estimates - Map for illustration only

AERIAL MAP



Boundary lines are estimates - Map for illustration only

JON FARLEY

Sales Associate

Cell Phone: 308-530-7854

Email: jon@lashleyland.com

PROPERTY IMAGES



PROPERTY IMAGES



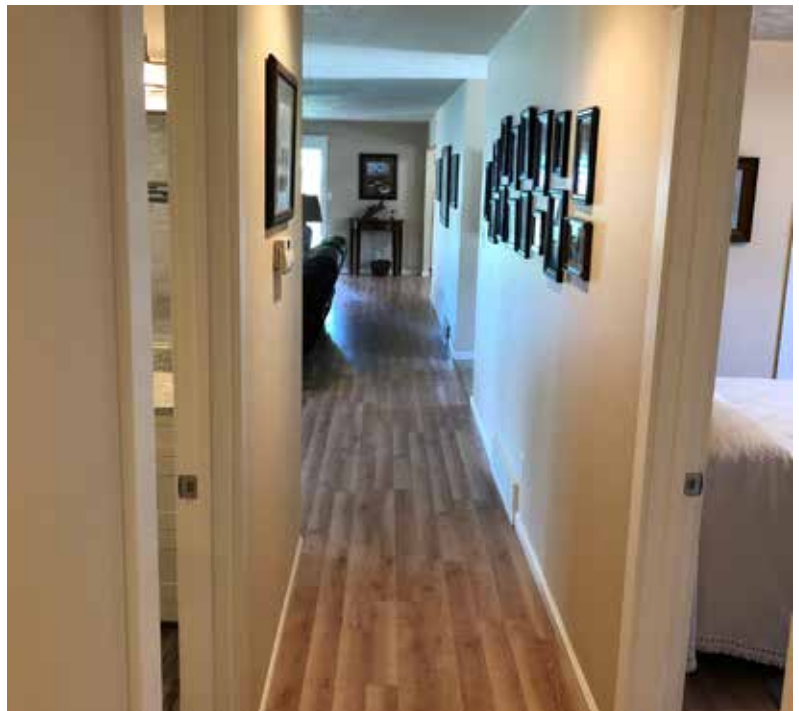
JON FARLEY

Sales Associate

Cell Phone: 308-530-7854

Email: jon@lashleyland.com

PROPERTY IMAGES





THE LAND EXPERTS YOU CAN TRUST

Contact Information

Office: 308-532-9300

Fax: 308-532-1854

Email: info@lashleyland.com

Website: LashleyLand.com

Mike Lashley, Owner|Broker

Scott Saults, Skip Marland, Jordan Maassen, April Good,
Mahaila Botts, Steve Farris, Don Hampton, Jon Farley,
Bryan North, Tami Timmerman-Lashley, Liz Skov and Amy Johnston

Like us on Facebook

[Facebook.com/LashleyLand](https://www.facebook.com/LashleyLand)

2218 E. Walker Road • North Platte, NE 69101

JON FARLEY

Sales Associate

Cell Phone: 308-530-7854

Email: Jon@lashleyland.com