



**1019 W. 10TH ST.  
NORTH PLATTE, NE**



**A nice bungalow style home that is move in ready!**

**TAMI TIMMERMAN-LASHLEY**

Residential Specialist

Tami's Cell: 308-660-9468

Email: [tami@lashleyland.com](mailto:tami@lashleyland.com)

# PROPERTY HIGHLIGHTS

## List Price

~~\$110,000~~

**\$105,000**

## Location

1019 W. 10th St., North Platte, NE

## Legal Description

Lot 8 Block 10 of Bellevue addition to the city of North Platte Lincoln County, Nebraska

## Taxes - Estimated

**\$1,773.94**

## Property Summary

This cute bungalow style home was built in 2012 and sits on a nice size lot. The open family room and kitchen have like new stainless-steel appliances, flooring and cabinetry. It has 900 square ft. with two bedrooms, and a spacious bathroom with a large vanity. Outside the home, there is a nice yard with a storage shed and a hot tub that stays with the property. This little bungalow would be the perfect starter home and is move in ready!!!!

All information herein is from sources deemed reliable, however the accuracy is not guaranteed by Lashley Land and Recreational Brokers, Inc., seller or agent. Offering is subject to error, omissions, prior sale, price change or withdrawal without notice.

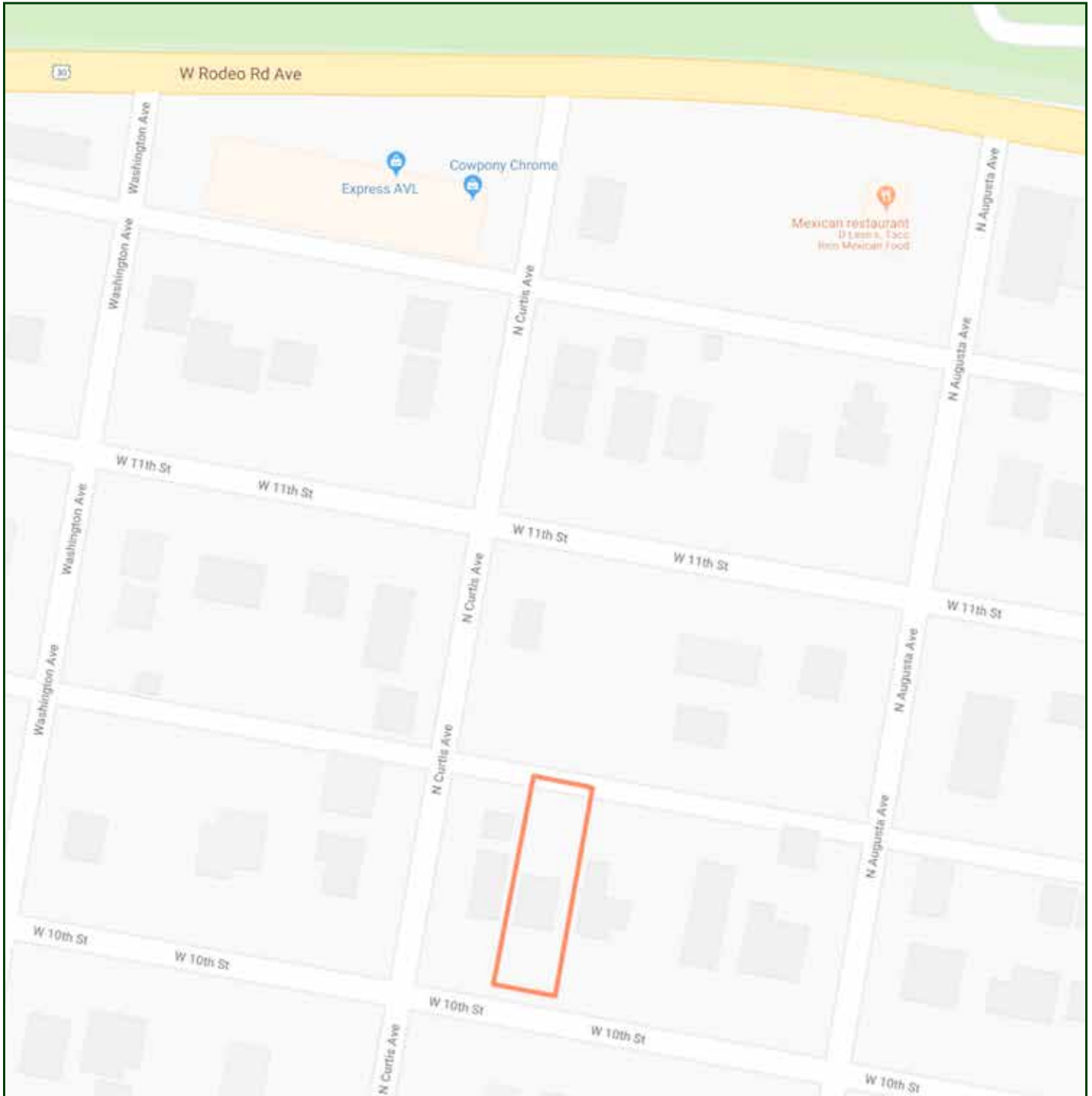
**TAMI TIMMERMAN-LASHLEY**

Residential Specialist

Tami's Cell: 308-660-9468

Email: [tami@lashleyland.com](mailto:tami@lashleyland.com)

# LOCATION MAP



Boundary lines are estimates - Map for illustration only

# AERIAL MAP



Boundary lines are estimates - Map for illustration only

**TAMI TIMMERMAN-LASHLEY**

Residential Specialist

Tami's Cell: 308-660-9468

Email: [tami@lashleyland.com](mailto:tami@lashleyland.com)

# PROPERTY IMAGES



# PROPERTY IMAGES



**TAMI TIMMERMAN-LASHLEY**

Residential Specialist

Tami's Cell: 308-660-9468

Email: [tami@lashleyland.com](mailto:tami@lashleyland.com)

# PROPERTY IMAGES





## THE REAL ESTATE EXPERTS YOU CAN TRUST

### Contact Information

Office: 308-532-9300

Fax: 308-532-1854

Email: [info@lashleyland.com](mailto:info@lashleyland.com)

Website: [LashleyLand.com](http://LashleyLand.com)

### Mike Lashley, Owner|Broker

Scott Saults, Skip Marland, Jordan Maassen, April Good,  
Mahaila Botts, Steve Farris, Don Hampton, Jon Farley,  
Bryan North, Tami Timmerman-Lashley, Liz Skov and Amy Johnston

Like us on Facebook  
[Facebook.com/LashleyLand](https://www.facebook.com/LashleyLand)

2218 E. Walker Road • North Platte, NE 69101

## TAMI TIMMERMAN-LASHLEY

Residential Specialist

Tami's Cell: 308-660-9468

Email: [tami@lashleyland.com](mailto:tami@lashleyland.com)