

**1602 W. C ST.
NORTH PLATTE, NE**



An all brick ranch style home with 1,293 sqft of living space.

MAHAILA BOTTS

Residential Specialist

Mahaila's Cell: 308-520-6128

Email: mahaila@lashleyland.com

PROPERTY HIGHLIGHTS

List Price	\$140,000
Location	1602 W. C St., North Platte, NE
Legal Description	Westfield 4th Add. 3 4 1 TP
Taxes - Estimated	\$2,293.96

Property Summary

Check out this lovely, all brick ranch home! It features 1,293 sq. ft. of living space with 3 bedrooms and 1 ½ baths. You will love the 378 sq. ft. three season bonus room for even more room to spread out. The yard is well maintained with lush grass and has underground sprinklers that were installed in 2014. All windows were updated in 2015. It also has covered screen gutters that were installed in 2012 with the roof. There is a dining room off of the kitchen that opens to the large living room. There is a nice one car attached garage that has a small work bench and cupboards all along the top of it for even more storage. The back yard is fully fenced in and a nice garden shed that will stay to store all your lawn care equipment. The carpets were recently cleaned, leaving nothing for you to do but move in and enjoy.

All information herein is from sources deemed reliable, however the accuracy is not guaranteed by Lashley Land and Recreational Brokers, Inc., seller or agent. Offering is subject to error, omissions, prior sale, price change or withdrawal without notice.

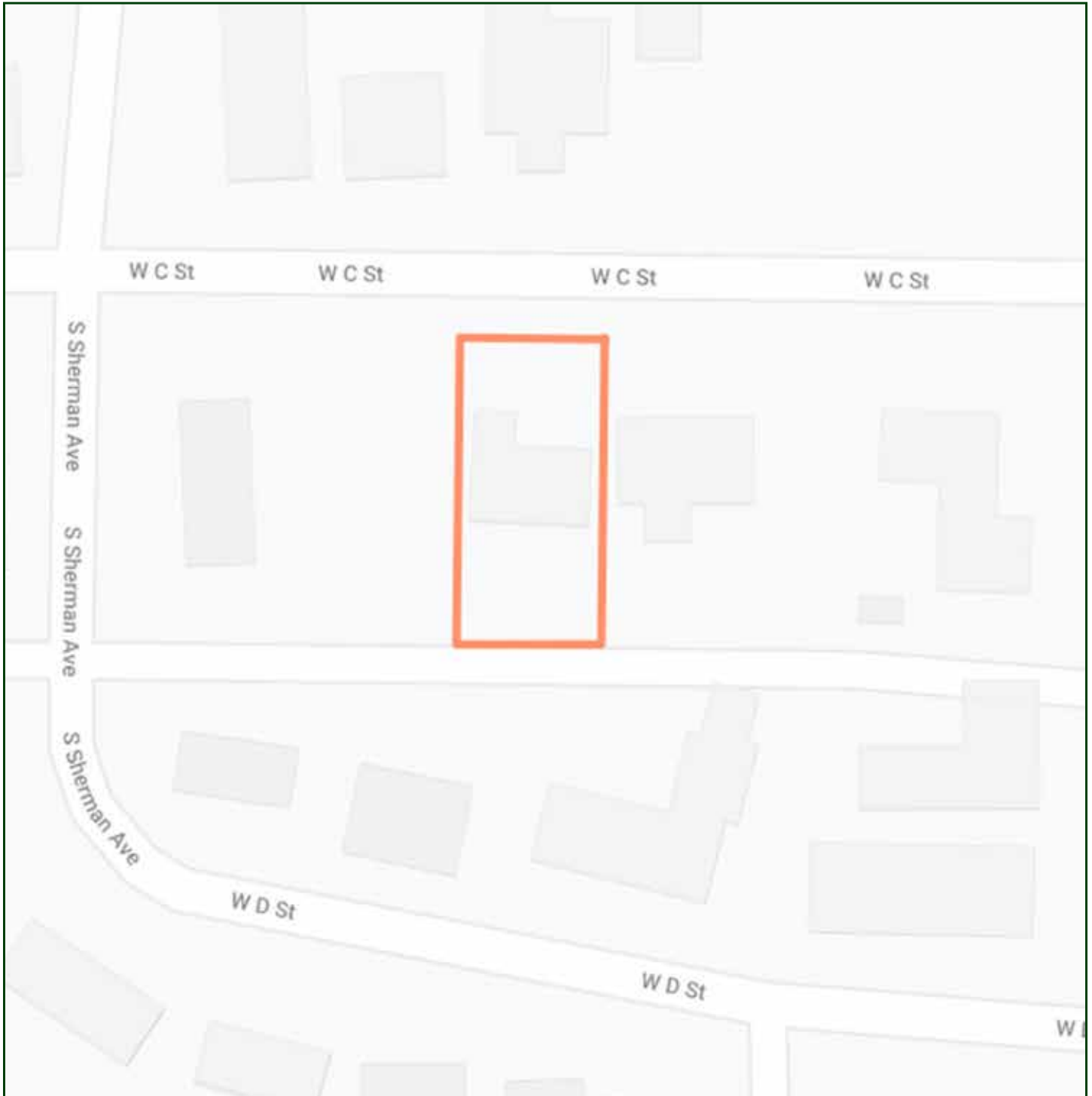
MAHAILA BOTTS

Residential Specialist

Mahaila's Cell: 308-520-6128

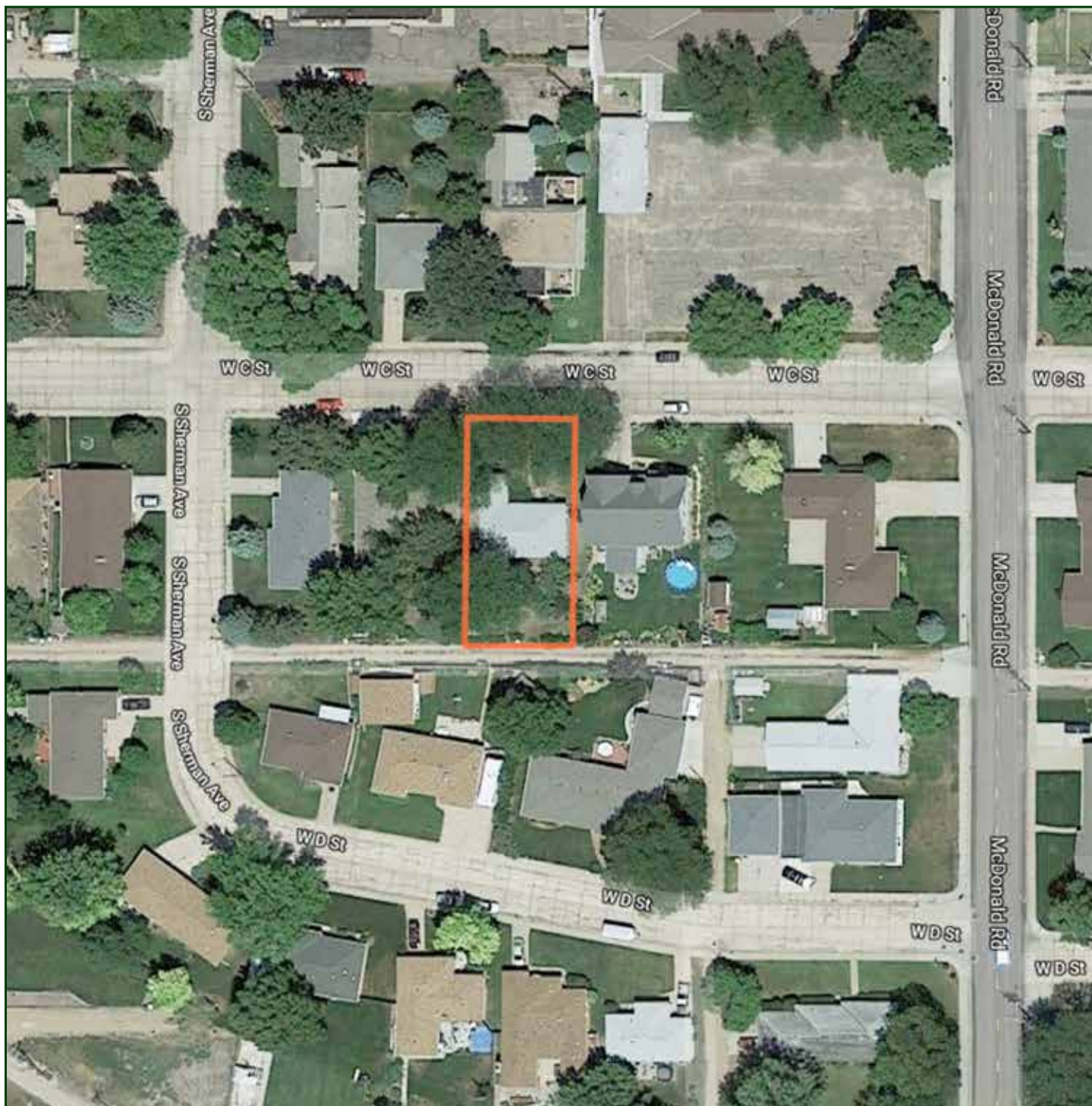
Email: mahaila@lashleyland.com

LOCATION MAP



Boundary lines are estimates - Map for illustration only

AERIAL MAP



Boundary lines are estimates - Map for illustration only

MAHAILA BOTTS

Residential Specialist

Mahaila's Cell: 308-520-6128

Email: mahaila@lashleyland.com

PROPERTY IMAGES



PROPERTY IMAGES



MAHAILA BOTTS
Residential Specialist
Mahaila's Cell: 308-520-6128
Email: mahaila@lashleyland.com

PROPERTY IMAGES





THE REAL ESTATE EXPERTS YOU CAN TRUST

Contact Information

Office: 308-532-9300

Fax: 308-532-1854

Email: info@lashleyland.com

Website: LashleyLand.com

Mike Lashley, Owner|Broker

Scott Saults, Skip Marland, Jordan Maassen, April Good,
Mahaila Botts, Steve Farris, Don Hampton, Jon Farley,
Bryan North, Tami Timmerman-Lashley, Liz Skov and Amy Johnston

Like us on Facebook
[Facebook.com/LashleyLand](https://www.facebook.com/LashleyLand)

2218 E. Walker Road • North Platte, NE 69101

MAHAILA BOTTS

Residential Specialist

Mahaila's Cell: 308-520-6128

Email: mahaila@lashleyland.com