



SILVER CREEK WILDLIFE TRACT 1



A 111± acre parcel of prime recreational ground.

BRYAN NORTH

Sales Associate

Cell Phone: 308-325-2858

Email: Bryan@lashleyland.com

PROPERTY HIGHLIGHTS

List Price	\$219,000
Location	Northwest of Silver Creek, NE
Legal Description	PR SW1/4 27-16-4 Nance County
Acres	111.6±
Taxes - Estimated	\$1,383.84

Property Summary

This 111± acre tract near Silver Creek, Nebraska is an outdoorsman's paradise. This property is a nice size and in a great price range to make this your perfect private getaway hunting spot!

This property has beautiful scenery with Prairie Creek meandering across the entire tract. There is live water, trees, abundant tall grass and cover, and easy access for those early morning arrivals

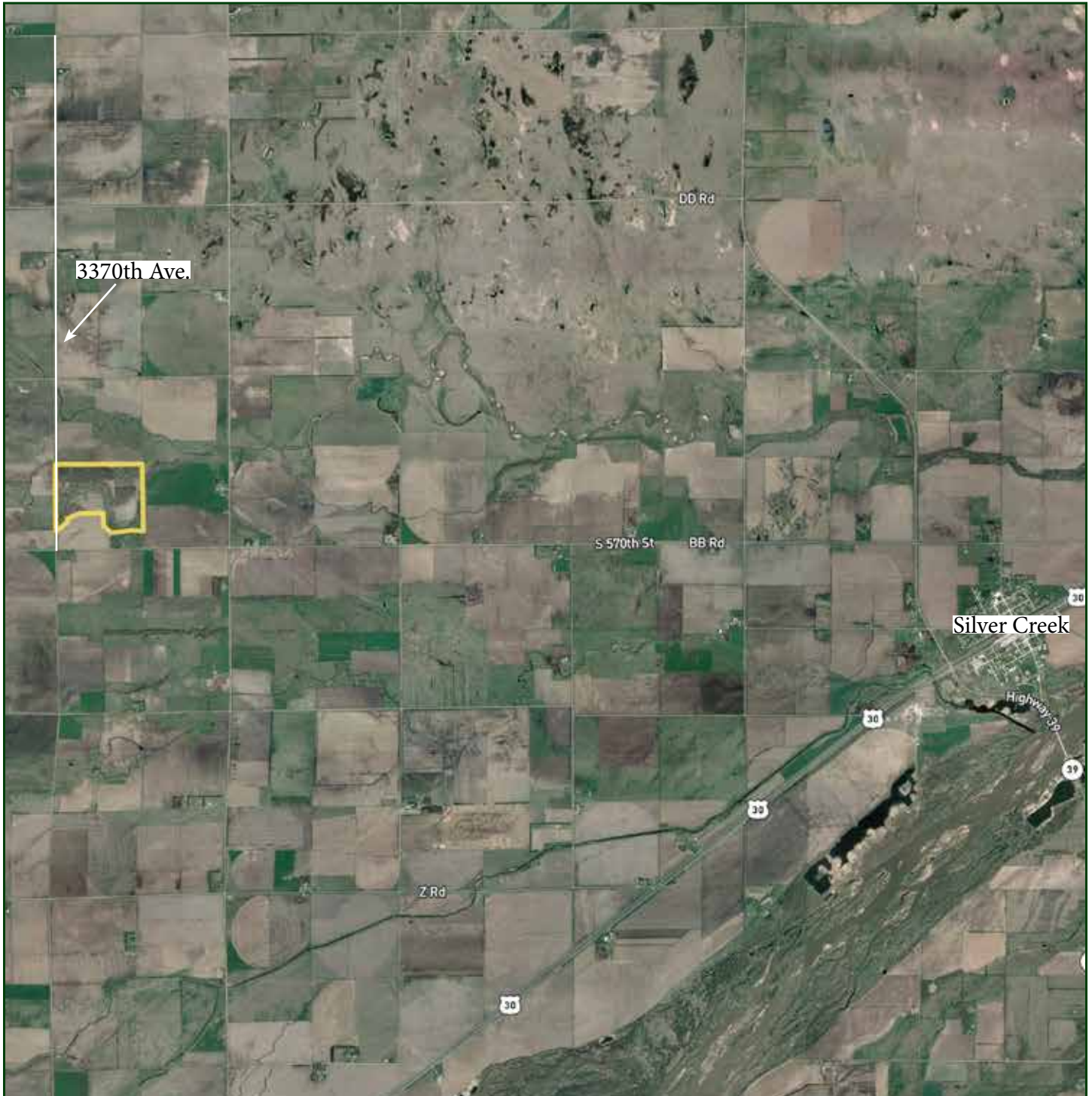
Due to the abundance of cover and water it holds all types of wildlife including, whitetail deer, turkeys, various types of waterfowl including ducks and geese and even hosts beaver and catfish along the creek.

Don't miss this opportunity to take advantage of a fantastic tract of land. You don't often see so many species of wildlife on one property and still having easy access with amenities of town not far away. This tract is only a couple of miles away from Tract 2 and Tract 3, and would be the perfect tie in to this tract for a fantastic cabin or home site.

All information herein is from sources deemed reliable, however the accuracy is not guaranteed by Lashley Land and Recreational Brokers, Inc., seller or agent. Offering is subject to error, omissions, prior sale, price change or withdrawal without notice.

BRYAN NORTH
Sales Associate
Cell Phone: 308-325-2858
Email: bryan@lashleyland.com

LOCATION MAP



Boundary lines are estimates - Map for illustration only

AERIAL MAP



Boundary lines are estimates - Map for illustration only

BRYAN NORTH

Sales Associate

Cell Phone: 308-325-2858

Email: bryan@lashleyland.com

PROPERTY IMAGES



PROPERTY IMAGES



BRYAN NORTH
Sales Associate
Cell Phone: 308-325-2858
Email: bryan@lashleyland.com

PROPERTY IMAGES





THE LAND EXPERTS YOU CAN TRUST

Contact Information

Office: 308-532-9300

Fax: 308-532-1854

Email: info@lashleyland.com

Website: LashleyLand.com

Mike Lashley, Owner|Broker

Scott Saults, Skip Marland, Jordan Maassen, April Good,
Mahaila Botts, Steve Farris, Don Hampton, Jon Farley,
Bryan North, Tami Timmerman-Lashley, Liz Skov and Amy Johnston

Like us on Facebook

[Facebook.com/LashleyLand](https://www.facebook.com/LashleyLand)

2218 E. Walker Road • North Platte, NE 69101

BRYAN NORTH

Sales Associate

Cell Phone: 308-325-2858

Email: Bryan@lashleyland.com