



LAKE MCCONAUGHY DEVELOPMENT PASTURE



A 174± acre pasture on the North Side of Lake Mac that is perfect for development.

SCOTT SAULTS

Associate Broker

Scott's Cell: 308-289-1383

Email: scott@lashleyland.com

PROPERTY HIGHLIGHTS

List Price	\$528,000
Location	11 miles North of Ogallala at the corner of Highway 92/61.
Legal Description	ALL S & W OF HWY 61 & N OF STATE HWY 92 EX TRS 20-15-38 174.34A. 1A-O----16 STR(20 15 38) Keith County NE
Acres	174.34±
Taxes - Estimated	\$1,069.86

Property Summary

Here is a 174 acre pasture at the corner of highway 92/61 on the north side of Lake McConaughy. Access is off highway 61 and this is the perfect property to develop into lake homes and or estates. The topography is gently sloping to the north which allows for incredible views of the lake. Windmill, tank and loafing shed are not included with the sale.

All information herein is from sources deemed reliable, however the accuracy is not guaranteed by Lashley Land and Recreational Brokers, Inc., seller or agent. Offering is subject to error, omissions, prior sale, price change or withdrawal without notice.

SCOTT SAULTS
Associate Broker
Scott's Cell: 308-289-1383
Email: scott@lashleyland.com

LOCATION MAP



Boundary lines are estimates - Map for illustration only

AERIAL MAP



Boundary lines are estimates - Map for illustration only

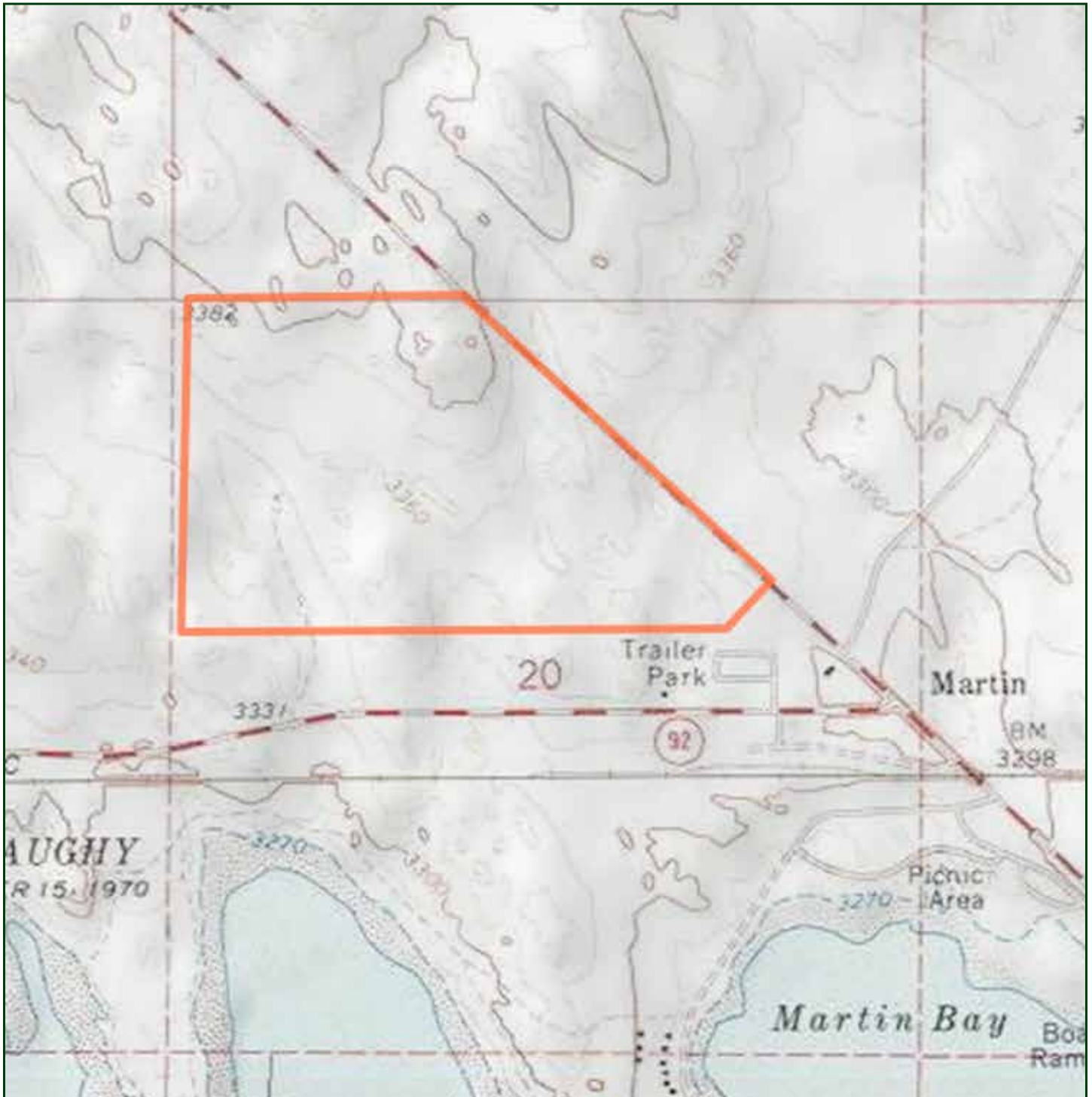
SCOTT SAULTS

Associate Broker

Scott's Cell: 308-289-1383

Email: scott@lashleyland.com

TOPO MAP



Boundary lines are estimates - Map for illustration only

PROPERTY IMAGES



SCOTT SAULTS
Associate Broker
Scott's Cell: 308-289-1383
Email: scott@lashleyland.com

PROPERTY IMAGES





THE LAND EXPERTS YOU CAN TRUST

Contact Information

Office: 308-532-9300

Fax: 308-532-1854

Email: info@lashleyland.com

Website: LashleyLand.com

Mike Lashley, Owner|Broker

Scott Saults, Skip Marland, Jordan Maassen, April Good,
Mahaila Botts, Steve Farris, Don Hampton, Jon Farley,
Bryan North, Tami Timmerman-Lashley, Liz Skov and Amy Johnston

Like us on Facebook

[Facebook.com/LashleyLand](https://www.facebook.com/LashleyLand)

2218 E. Walker Road • North Platte, NE 69101

SCOTT SAULTS

Associate Broker

Scott's Cell: 308-289-1383

Email: scott@lashleyland.com