

**1620 WEST D STREET  
NORTH PLATTE, NE**



A beautiful brick home located on a large lot.

**MAHAILA BOTTS**

Residential Specialist

Mahaila's Cell: 308-520-6128

Email: [mahaila@lashleyland.com](mailto:mahaila@lashleyland.com)

# PROPERTY HIGHLIGHTS

## List Price

~~\$175,000~~

**\$165,000**

## Location

1620 W. D Street, North Platte, NE

## Legal Description

Dunn RePlat (Of Homan Add. 2 & PT. Vac. Alley & PT. Vac. Suburban Irr. Canal) Lot 1 1 TP

## Taxes - Estimated

**\$2,681.72**

## Property Summary

1620 W. D St. in North Platte, NE is a beautiful all brick ranch home. It features 1454 sq. ft. of living space. It has 2 living rooms, 3 bedrooms, one with an oversized twin Murphy bed and 2 baths, with one boasting a whirlpool tub. This home has upgraded Andersen windows throughout and brand new carpeting in the living room and bedrooms. The property is completely privacy fenced in the back and has a huge lot, with room to park your toys like a camper or boat. There is also a tandem 2 car garage and a cement pad wired with a 220 plugin ready for your hot tub. You will love the well maintained landscaping and lawn that features underground sprinklers for both the front and backyards. You are sure to enjoy sitting on your front porch or entertaining on your back deck. The kitchen has newer remodeling, with a gas range and all appliances will stay. Both the furnace and A.C. were replaced in 2016 and the water heater was recently done in 2013. The roof is also only approximately 5 years old.

All information herein is from sources deemed reliable, however the accuracy is not guaranteed by Lashley Land and Recreational Brokers, Inc., seller or agent. Offering is subject to error, omissions, prior sale, price change or withdrawal without notice.

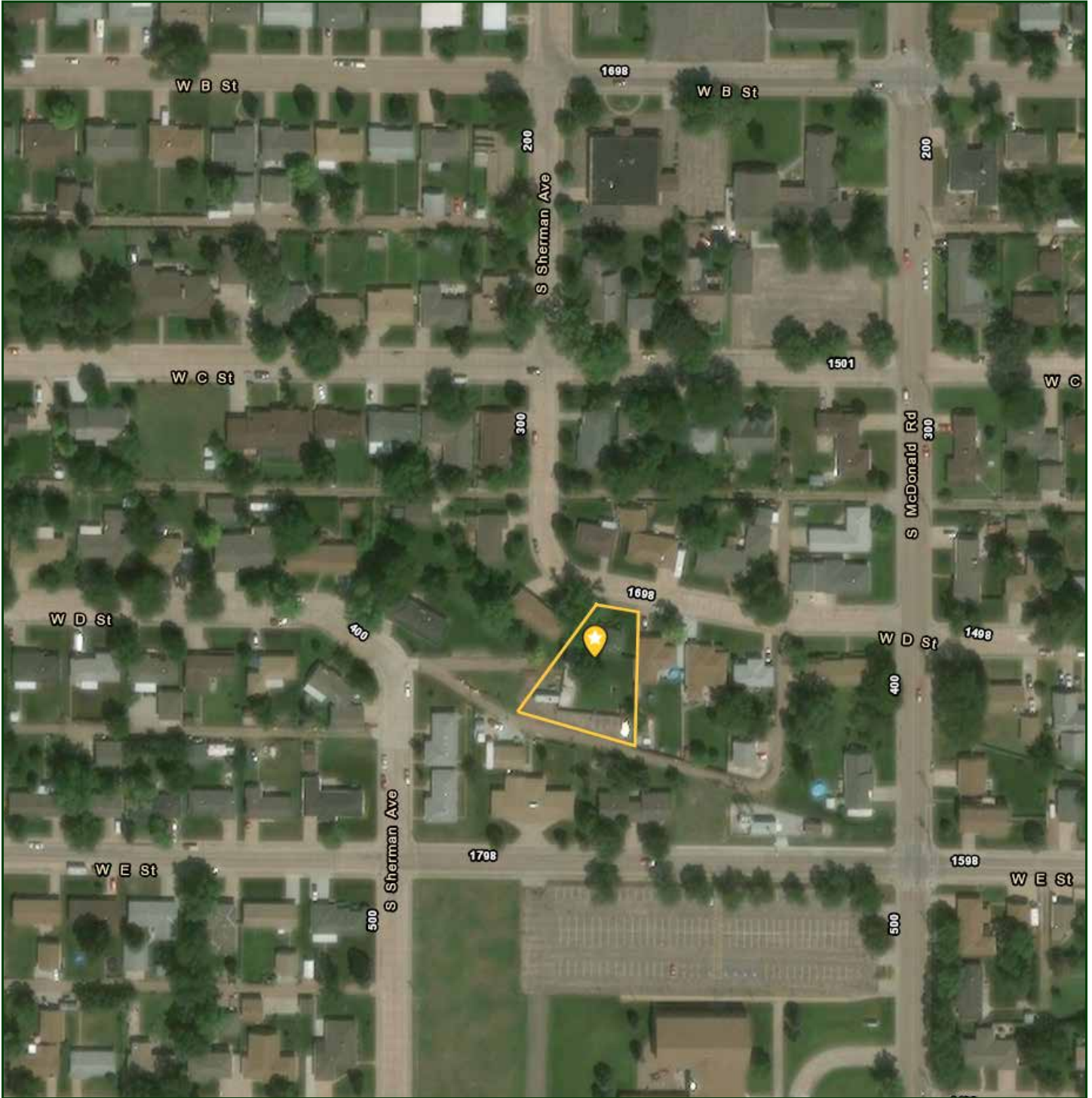
**MAHAILA BOTTS**

Residential Specialist

Mahaila's Cell: 308-520-6128

Email: mahaila@lashleyland.com

# AERIAL MAP



Boundary lines are estimates - Map for illustration only

# PROPERTY IMAGES



**MAHAILA BOTTS**  
Residential Specialist  
Mahaila's Cell: 308-520-6128  
Email: mahaila@lashleyland.com

# PROPERTY IMAGES



# PROPERTY IMAGES



**MAHAILA BOTTS**  
Residential Specialist  
Mahaila's Cell: 308-520-6128  
Email: mahaila@lashleyland.com

# PROPERTY IMAGES





## THE REAL ESTATE EXPERTS YOU CAN TRUST

### Contact Information

Office: 308-532-9300

Fax: 308-532-1854

Email: [info@lashleyland.com](mailto:info@lashleyland.com)

Website: [LashleyLand.com](http://LashleyLand.com)

### Mike Lashley, Owner|Broker

Scott Saults, Skip Marland, Jordan Maassen, April Good,  
Mahaila Botts, Steve Farris, Don Hampton, Dina Denton,  
Jon Farley, Liz Skov and Amy Johnston

Like us on Facebook  
[Facebook.com/LashleyLand](https://www.facebook.com/LashleyLand)

2218 E. Walker Road • North Platte, NE 69101

## MAHAILA BOTTS

Residential Specialist

Mahaila's Cell: 308-520-6128

Email: [mahaila@lashleyland.com](mailto:mahaila@lashleyland.com)